

# GOTTAK

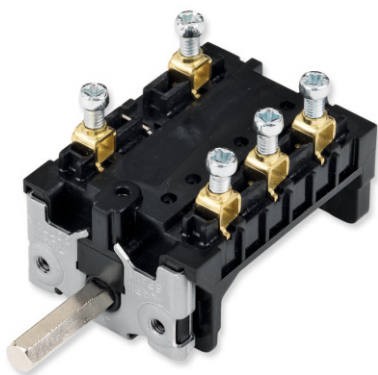
**GTK** ISO 9001:2008

# 7LA-K BAKELITE

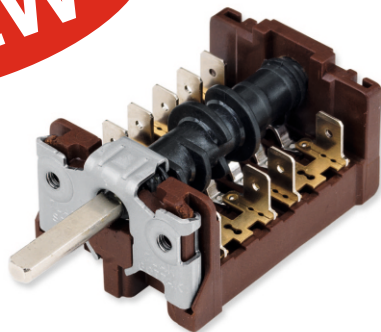
## ROTARY SWITCHES

# FOR PROFESSIONAL APPLICATIONS

CIRCUITS: FROM 2 up 12 CIRCUITS



**NEW**



### SPECIFICATIONS

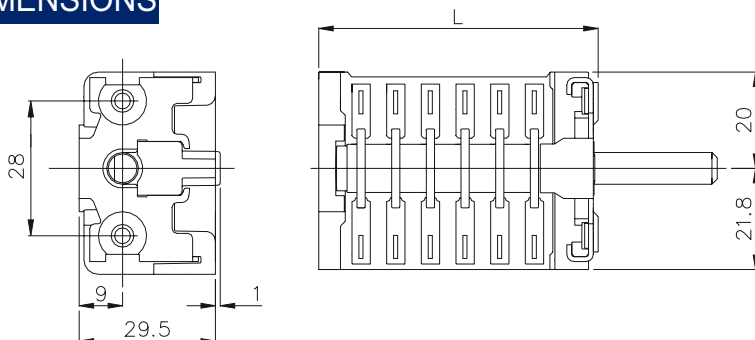
- MATERIA : BAKELITE body PPScom
- WORKING TEMPERATURE : 200°C
- TERMINALS SCREWorFAST-ONtype
- CIRCUITS BRASS(85%Cu)
- CONTACTS SILVER
- SHAFT METAL

### RATING



25 A (4) 250V~  
16 A (4) 250V~  
10 A (2) 400V~

### DIMENSIONS



CIRCUITS	L
2	28
3	35,2
4	42,4
5	49,6
6	56,8
7	64
8	71,2
9	78,4
10	85,6
11	92,8
12	100

GOTTAK, S.L.  
C/Pujades 77/79, 6 6  
08005 Barcelona (Spain)

Tel:(34-93) 3211446  
Fax:(34-93) 4308025  
WEB: <http://www.gottak.com>  
E-MAIL: [gottak@gottak.com](mailto:gottak@gottak.com)