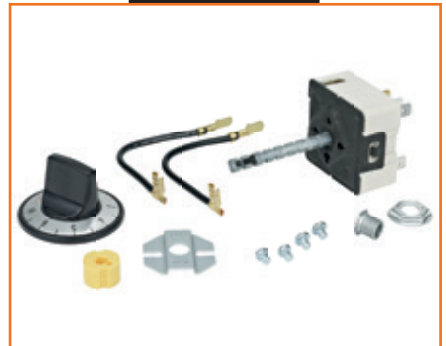




Selecting the table setting is as important as the cooking controls used to deliver uncompromising excellence.

The Robertshaw® electromechanical and electronic controls offer reliability and custom solutions for setting, controlling and monitoring temperatures in commercial cooking applications.

Electric Infinite Switches.....	A2
Electric Thermostats.....	A4
Gas Thermostats.....	A14
Gas Valves	A20
Hot Surface Igniters.....	A26
Oven Spark Ignition Modules.....	A27



Cooking

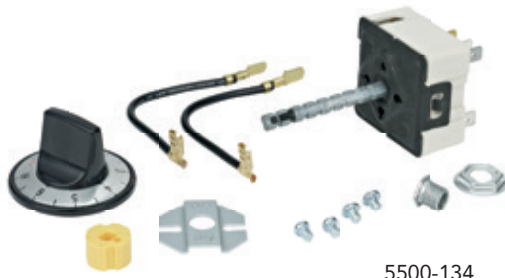




Robertshaw®



Scan for all models, literature and cross reference



5500-134

ELECTRIC INFINITE SWITCHES

5500 Series

The Robertshaw® 5500 Series Infinite Switch is a rotary switch which controls the power dissipated by a heating element. It is used on electric ranges, hot plates, warming drawers and zones, barbecue grills, space heaters, quartz heaters and many applications which call for proportionate control of a resistive load.

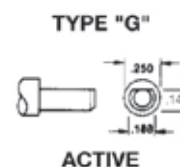
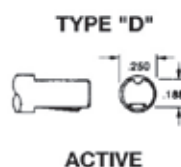
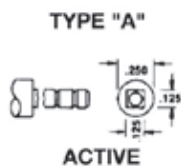
Features and Benefits

- Small compact design
- Clockwise or counterclockwise rotation
- Variety of shaft lengths and configurations
- Screw mount or bushing mount
- Push-To-Turn (PTT) or Non-Push-To-Turn (Non-PTT)

Specifications

Part Numbers	Description	% Input at Low	Dial	Dial Shaft Type	Dial Shaft Length	Mounting Type	Voltage	Electrical Rating
5500-134	Commercial Uni-Kit®	5%	Black	D	2-1/8"	Universal	120V AC	100 Watts to 3600 Watts at 240V AC, 15 Amps max @ 210°F (100°C)
5500-135	Commercial Uni-Kit	5%	White	D	2-1/8"	Universal	120V AC	100 Watts to 3600 Watts at 240V AC, 15 Amps max @ 210°F (100°C)
5500-200	Infinite Controls Uni-Kit Push-To-Turn	5%	None	A	2" Break-Off	Universal	240V AC	100 Watts to 3600 Watts at 240V AC, 15 Amps max @ 210°F (100°C)
5500-202	Infinite Controls Uni-Kit	5%	None	A	2" Break-Off	Universal	240V AC	100 Watts to 3600 Watts at 240V AC, 15 Amps max @ 210°F (100°C)
5500-212	G.E./Hotpoint Uni-Kit	5%	None	G	2" Break-Off	Universal	240V AC	100 Watts to 3600 Watts at 240V AC, 15 Amps max @ 210°F (100°C)
5500-234	Commercial Uni-Kit	5%	Black	D	2-1/8"	Universal	240V AC	100 Watts to 3600 Watts at 240V AC, 15 Amps max @ 210°F (100°C)
5500-235	Commercial Uni-Kit	5%	White	D	2-1/8"	Universal	240V AC	100 Watts to 3600 Watts at 240V AC, 15 Amps max @ 210°F (100°C)
5500-287	Whirlpool Uni-Kit Push-To-Turn	5%	None	D	1-3/8", 7/8" & 11/16" Break-Offs	4 Position Screw	240V AC	100 Watts to 3600 Watts at 240V AC, 15 Amps max @ 210°F (100°C)

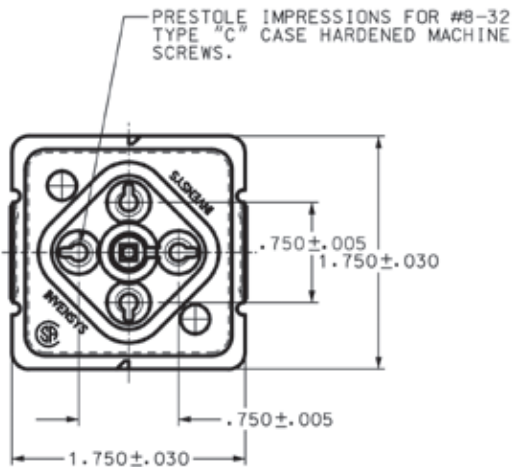
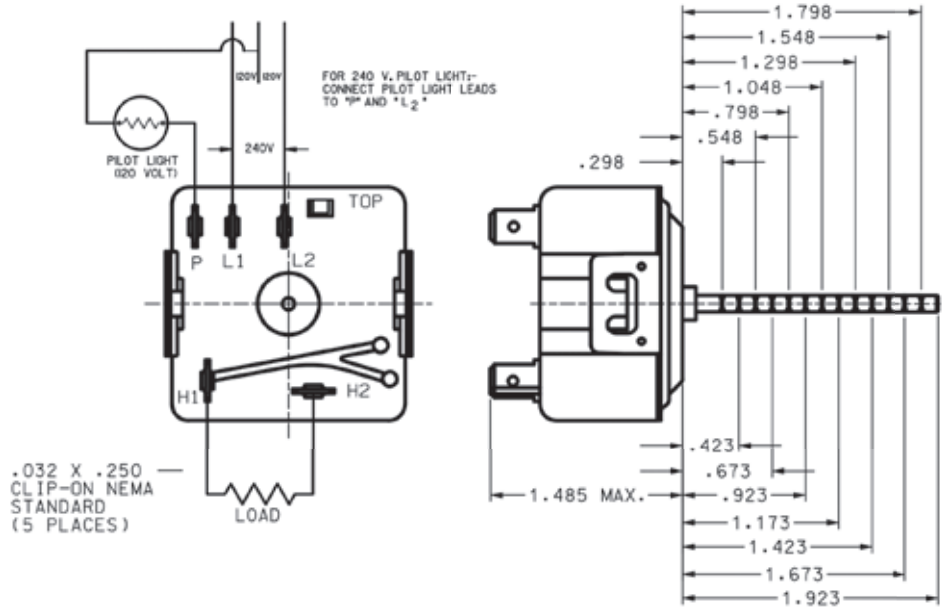
Product Dimensions - Dimensions are in inches.





Product Drawings

Product Dimensions - Dimensions are in inches.



Robertshaw[®]

1 Year
Limited
Warranty



Robertshaw®



Scan for all models, literature and cross reference



5300-614



5300-401

ELECTRIC THERMOSTATS

5300 Series

The Robertshaw® 5300 Series Electric Thermostat is a snap-acting, single pole single throw (SPST) type thermostat. Most thermostats use silver contacts and have heavy-duty terminals for durability and sustained accuracy. The snap-action mechanism is precise and reliable. This direct acting series of thermostats is suitable for the commercial cooking industry.

Features and Benefits

- KN models are NAK filled diastats with temperature ranges up to 975°F (524°C)
- Rugged and compact design for versatility and long life
- Bulb and capillary available in copper, nickel plated copper and stainless steel (most models)
- Plastic coating available for protection against moisture, dust, etc. (most models)
- Dials of heat resistant plastic available
- RX millivolt models with hermetically sealed reed switch
- Stem flat in down position
- Ambient temperature 200°F (93°C)

Specifications

Part Numbers	Description	Temperature Range	Capillary Length	Bulb Size	Stem Length	Mounting Bracket	Dial Type	Mechanical Differential	Stuffing Box	Electrical Rating
5300-146	SJ Pilot Duty Model with Auxiliary Switch	100°F to 450°F	36"	3/16" x 11-1/8" Nickel	13/16"	#1, 1-3/4"	4-Way	12°F	NA	30 Amp @ 277V AC 20 Amp @ 480V AC 18 FLA, 72 LRA @ 250V AC 125 VA Pilot Duty at 120/277 Volts
5300-175	S Model	100°F to 325°F	36"	3/16" x 11-3/4" Nickel	13/16"	#1, 1-3/4"	NA	12°F	NA	30 Amp @ 277V AC 20 Amp @ 480V AC 18 FLA, 72 LRA @ 250V AC 125 VA Pilot Duty at 120/277 Volts
5300-219	SP Model	60°F to 240°F	36"	1/4" x 6-7/16" Copper	3/8"	#1, 1-3/4"	NA	8°F	NA	30 Amp @ 277V AC 20 Amp @ 480V AC 18 FLA, 72 LRA @ 250V AC 125 VA Pilot Duty at 120/277 Volts
5300-401	RX Millivolt Model with Hermetically Sealed Reed Switch	200°F to 400°F	36"	3/8" x 5-5/8" Nickel	13/16"	#1, 1-3/4"	4-Way	8°F	1/4" Nickel	0.67 Amp @ 5V DC





Robertshaw[®]

Specifications - continued

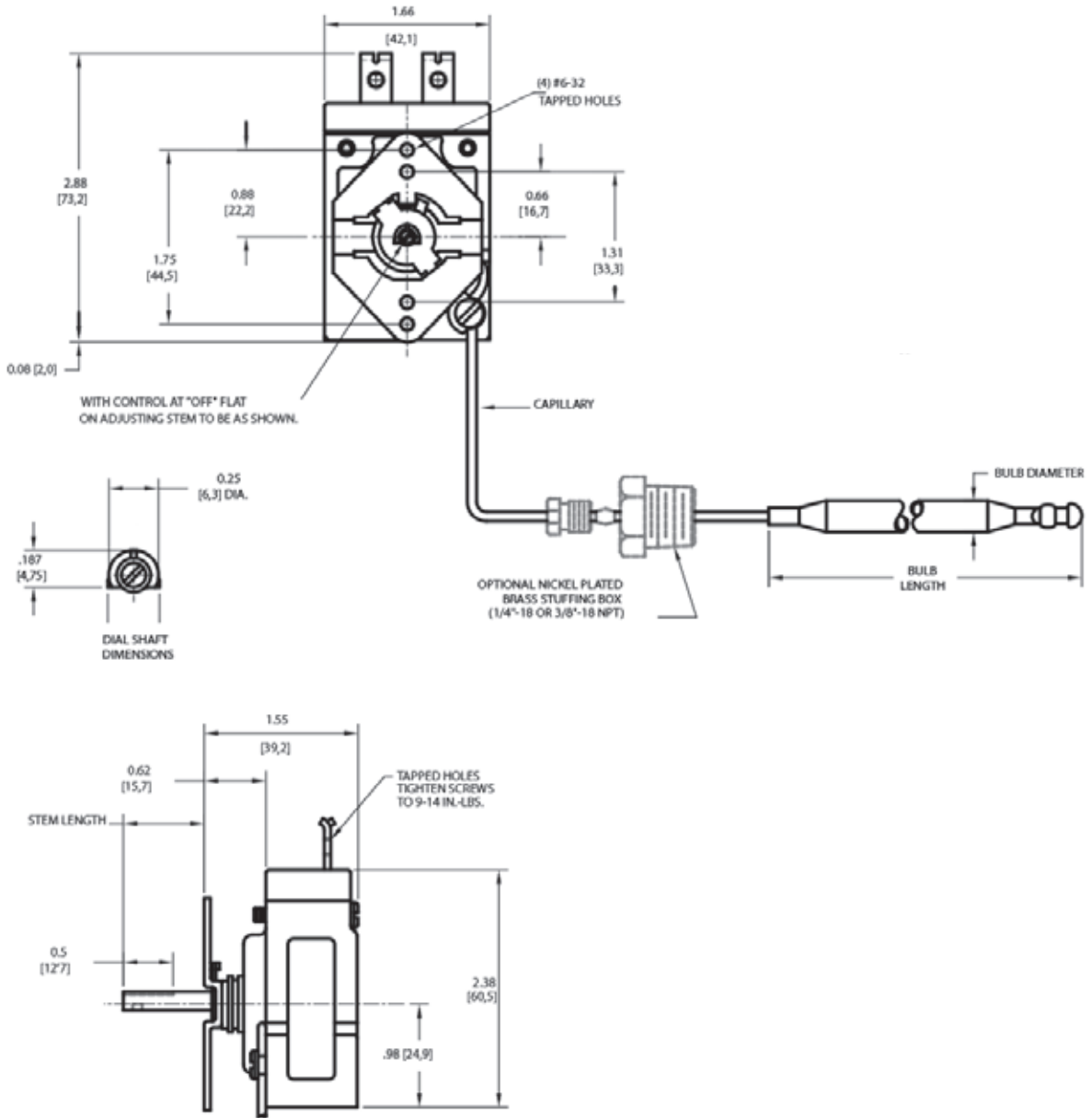
Part Numbers	Description	Temperature Range	Capillary Length	Bulb Size	Stem Length	Mounting Bracket	Dial Type	Mechanical Differential	Stuffing Box	Electrical Rating
5300-406	RX Millivolt Model with Hermetically Sealed Reed Switch	200°F to 375°F	36"	3/8" x 5-5/8" Nickel	13/16"	#1, 1-3/4"	4-Way	8°F	3/8" Nickel	0.67 Amp @ 5V DC
5300-502	KNP Model with 1-10 Dial (Wide)	250°F to 960°F	36"	5/32" x 8-3/4" Stainless Steel	1"	#5, 1-1/4"	4-Way	25°F	NA	27 Amp @ 208V AC 25 Amp @ 240V AC 22.5 Amp @ 277V AC 20 Amp @ 480V AC 125 VA Pilot Duty at 120/277 Volts
5300-612	SP Model Uni-Kit [®]	60°F to 250°F	60"	1/4" x 9-1/4" Copper	2" Kit	#6, Kit	4-Way	8°F	NA	30 Amp @ 277V AC 20 Amp @ 480V AC 18 FLA, 72 LRA @ 250V AC 125 VA Pilot Duty at 120/277 Volts
5300-614	SP Model Uni-Kit	60°F to 250°F	60"	3/8" x 4-1/2" Nickel	2" Kit	#6, Kit	4-Way	8°F	NA	30 Amp @ 277V AC 20 Amp @ 480V AC 18 FLA, 72 LRA @ 250V AC 125 VA Pilot Duty at 120/277 Volts
5300-618	SP Model Uni-Kit	100°F to 450°F	60"	3/16" x 11-1/8" Nickel	2" Kit	#6, Kit	4-Way	12°F	NA	30 Amp @ 277V AC 20 Amp @ 480V AC 18 FLA, 72 LRA @ 250V AC 125 VA Pilot Duty at 120/277 Volts
5300-641	SP Model Uni-Kit	200°F to 400°F	36"	5/16" x 7-1/2" Nickel	2" Kit	#6, Kit	4-Way	8°F	3/8" Nickel	30 Amp @ 277V AC 20 Amp @ 480V AC 18 FLA, 72 LRA @ 250V AC 125 VA Pilot Duty at 120/277 Volts
5300-651	SP Model Uni-Kit	175°F to 550°F	60"	3/16" x 11-5/8" Nickel	2" Kit	#6, Kit	4-Way	12°F	NA	30 Amp @ 277V AC 20 Amp @ 480V AC 18 FLA, 72 LRA @ 250V AC 125 VA Pilot Duty at 120/277 Volts
5300-671	SP Model Uni-Kit	300°F to 700°F	60"	3/16" x 12-1/4" Nickel	2" Kit	#6, Kit	4-Way	12°F	NA	30 Amp @ 277V AC 20 Amp @ 480V AC 18 FLA, 72 LRA @ 250V AC 125 VA Pilot Duty at 120/277 Volts
5300-711*	KX Pilot Duty Model Dip Sealed	200°F to 400°F	36"	3/8" x 5-5/8" Nickel	13/16"	#1, 1-3/4"	4-Way	8°F	1/4" Nickel	50 VA Pilot Duty at 120 / 277 Volts
5300-735	KXP Pilot Duty Model Uni-Kit	175°F to 550°F	60"	3/16" x 11-5/8" Nickel	2" Kit	#6, Kit	4-Way	12°F	NA	50 VA Pilot Duty at 120 / 277 Volts
5300-766	KX Pilot Duty Model	200°F to 400°F	24"	5/16" x 5-5/8" Stainless Steel	13/16"	#1, 1-3/4"	4-Way	8°F	3/8" Nickel	50 VA Pilot Duty at 120 / 277 Volts

*International export models



Product Drawings

Product Dimensions - Dimensions are inches and [millimeters].





ELECTRIC THERMOSTATS - LIMIT CONTROLS

5225 Series

The Robertshaw® 5225 Series Limit Control is designed for any appliance where temperature protection is needed. All 5225 Series controls are non-adjustable, factory calibrated, and feature negative biased power element diaphragms. The 5225 Series is a proven safety control for commercial and specialty applications. They are available in automatic or manual reset versions with temperature settings from 425°F to 600°F (218°C to 316°C).

Features and Benefits

- Bulb and capillary assemblies available in nickel plated copper
- Available in manual reset or automatic operation
- Control function is designed to interrupt power in the appliance circuit at the calibrated temperature



5225-112

Robertshaw
®



Scan for all models, literature and cross reference

Specifications

Part Numbers	Description	Fixed Temperature	Capillary Length	Bulb Size	Mounting Bracket	Stuffing Box
5225-009	LCH Manual Reset Limit Control	450°F	30"	5/16" x 3-5/8" Nickel	#1	NA
5225-010	LCC Automatic Reset Limit Control	450°F	60"	3/16" x 4-7/8" Nickel	#1	3/8"
5225-047	LCH Manual Reset Limit Control	450°F	24"	3/16" x 7-5/8" Nickel	#1	3/8"
5225-054	LCH Manual Reset Limit Control	440°F	30"	1/4" x 4-7/8" Nickel	#7	Panel Nut
5225-112	LCH Manual Reset Limit Control	450°F	30"	1/4" x 4-7/8" Nickel	#3	1/4"

Model	Description	UL Rating	CSA Rating	European
LCH	SPST - Break on Temperature Rise Manual Reset. Type M2*	30 A, 250 V AC @ 125-480 V AC 35 VA PD @ 24 V, 60 Hz	30 A @ 125-480 V AC	30 A @ 480 V AC
LCC	SPDT - Make and / or Break on Temperature Rise. Automatic Reset	25 A, 250 VA @ 125-480 V, 60 Hz 35 A @ 24 V AC	25 A, 250 V AC @ 125-480 V AC 35 VA PD @ 24 V, 60 Hz	25 A @ 480 V AC

*M2 switch - trip free - will not recycle if reset button is depressed





Cooking

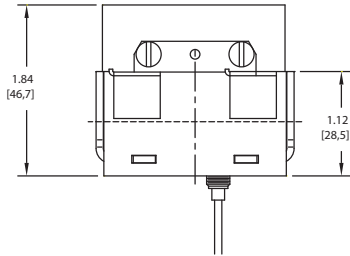
Robertshaw®

Product Drawings

Product Dimensions - Dimensions are inches and [millimeters].

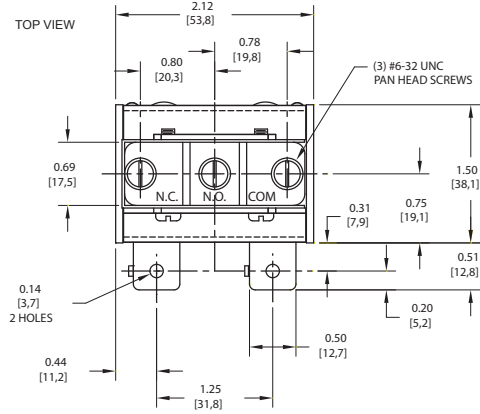
MODEL LCC

FRONT VIEW

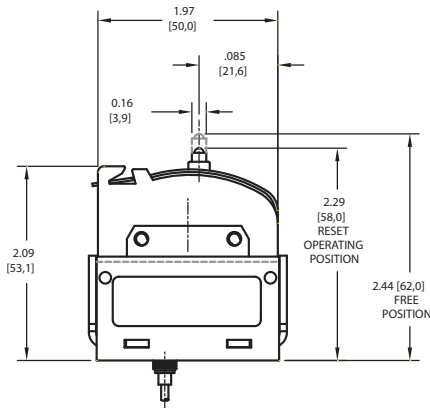


MODEL LCC

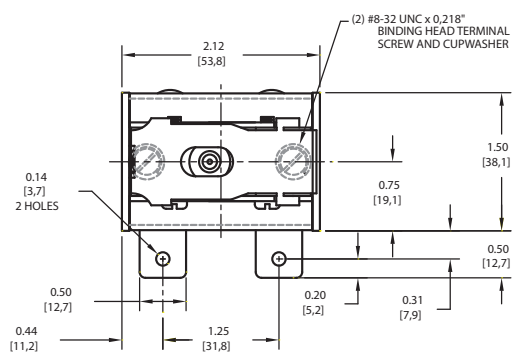
TOP VIEW



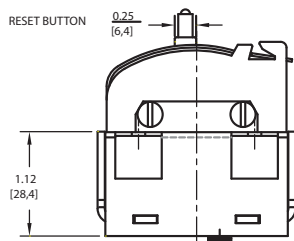
MODEL LCH



MODEL LCH



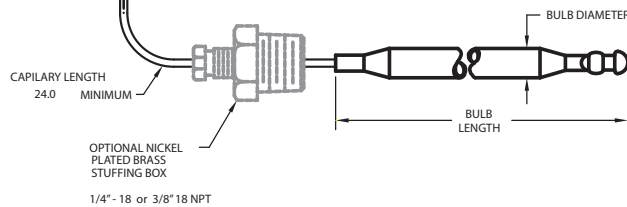
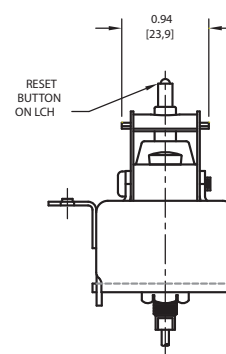
MODEL LCH



PANEL NUT



MODEL LCH

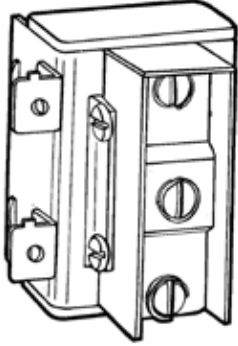




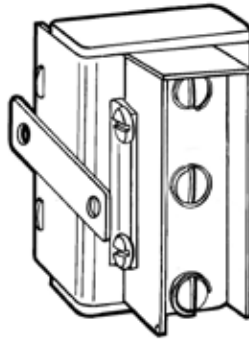
Product Drawings

Mounting Bracket Types

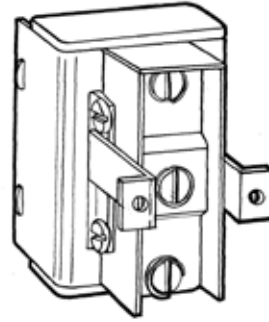
Type #1



Type #3



Type #7



Robertshaw[®]

1 Year
Limited
Warranty



Robertshaw®



Scan for all models, literature and cross reference



5210-125

ELECTRIC THERMOSTATS

5210 Series

The Robertshaw® 5210 Series Electric Thermostat is a direct acting, single pole, slow make and break type thermostat. Typical applications are for incubators, laboratory ovens, water baths, sterilizers, dishwashers, steam tables, scalding tanks and other equipment where a close temperature differential is required.

Features and Benefits

- Temperature ranges to 550°F (288°C)
- Single pole, slow make and break design
- Very sensitive to temperature change
- Small temperature differential between make and break
- Fine silver contacts to assure consistent switch action and long life
- Rugged and compact design for versatility of application
- Bulb and capillary available in copper or nickel plated copper

Specifications

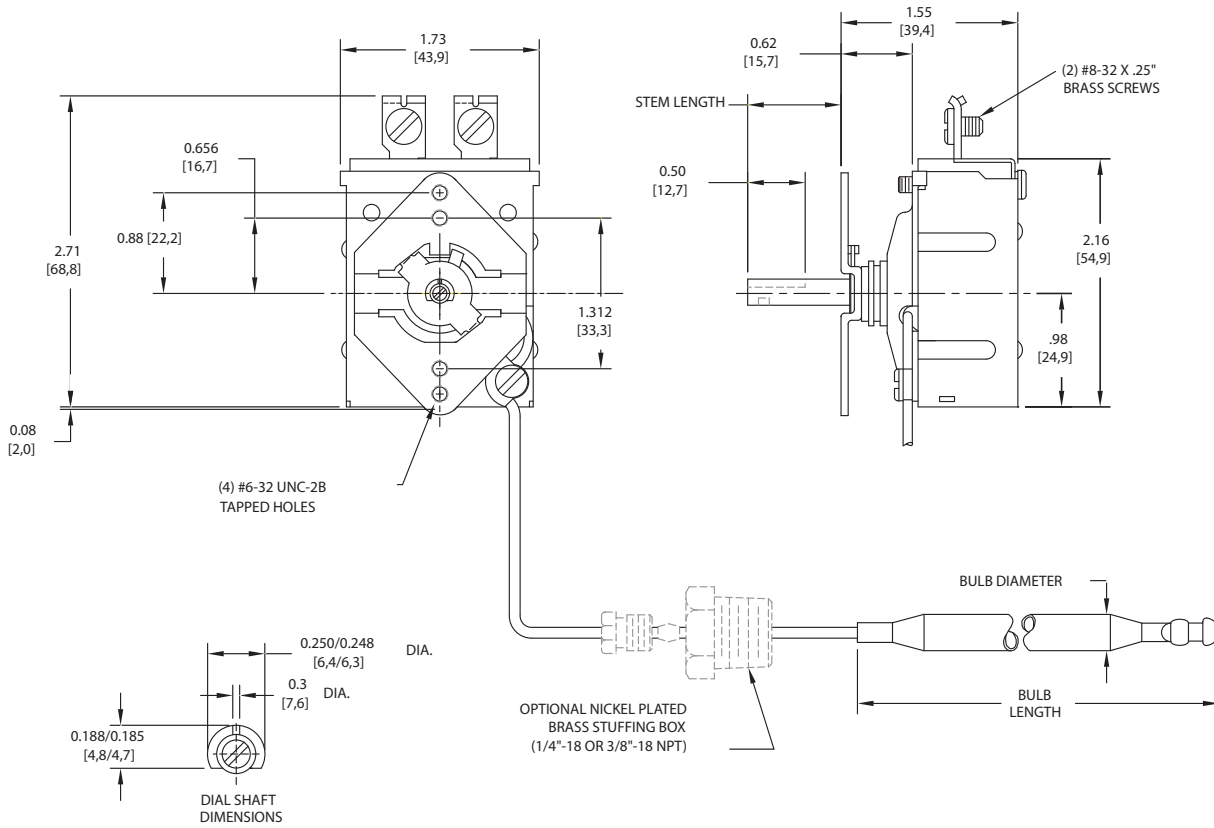
Part Numbers	Description	Dial Temperature Range	Ambient Temperature	Capillary Length	Bulb Size	Electrical Rating
5210-125	B-10 Commercial Direct Acting Thermostat	60°F to 200°F (15°C to 93°C)	32°F to 150°F (0°C to 60°C)	42"	3/16" x 15-3/8" Nickel	20 Amps @ 125V AC 15 Amps @ 250V AC 125VA PD @ 125V AC





Product Drawings

Product Dimensions - Dimensions are inches and [millimeters].



Robertshaw[®]

1 Year
Limited
Warranty



Robertshaw®



Scan for all models, literature and cross reference



5000-851

ELECTRIC THERMOSTATS

5000 Series

The Robertshaw® 5000 Series Electric Thermostat is a heavy-duty thermostat designed for use in harsh applications where precise temperature control is required. The control uses a double pole single throw (DPST) snap-action mechanism with a positive OFF switch. It is recommended for use on applications that require double pole operation and accurate temperature control.

Features and Benefits

- DPST with positive OFF
- Mechanical snap-action is instantaneous, positive and non-fatiguing
- Reacts to exceedingly small movements of the diaphragms for very close temperature differential
- Diaphragm assembly features two stainless steel diaphragms electrically welded together
- Maximum sensitivity without overstressing the metal
- Supplied with terminals mounted in four different positions
- Bulb and capillary available in copper, nickel plated copper, or stainless steel

Specifications

Part Numbers	Description	Dial Temperature Range	Capillary Length	Bulb Size	Dial Type	Mechanical Differential	Electrical Rating
5000-811	D1 & D18 Commercial Electric Thermostat with Pilot Light, 4-Way Bezel, Uni-Kit®	60°F to 250°F (15°C to 121°C)	60"	3/8" x 4-1/2"	4-Way	6°F (3°C)	120, 277V AC @ 30A 480V AC @ 10A 277V AC @ 250VA 125V AC @ 125VA
5000-851	D1 & D18 Commercial Electric Thermostat with Pilot Light, 4-Way Bezel, Uni-Kit	100°F to 550°F (38°C to 288°C)	60"	3/16" x 13" Nickel	4-Way	6°F (3°C)	120, 277V AC @ 30A 480V AC @ 10A 277V AC @ 250VA 125V AC @ 125VA

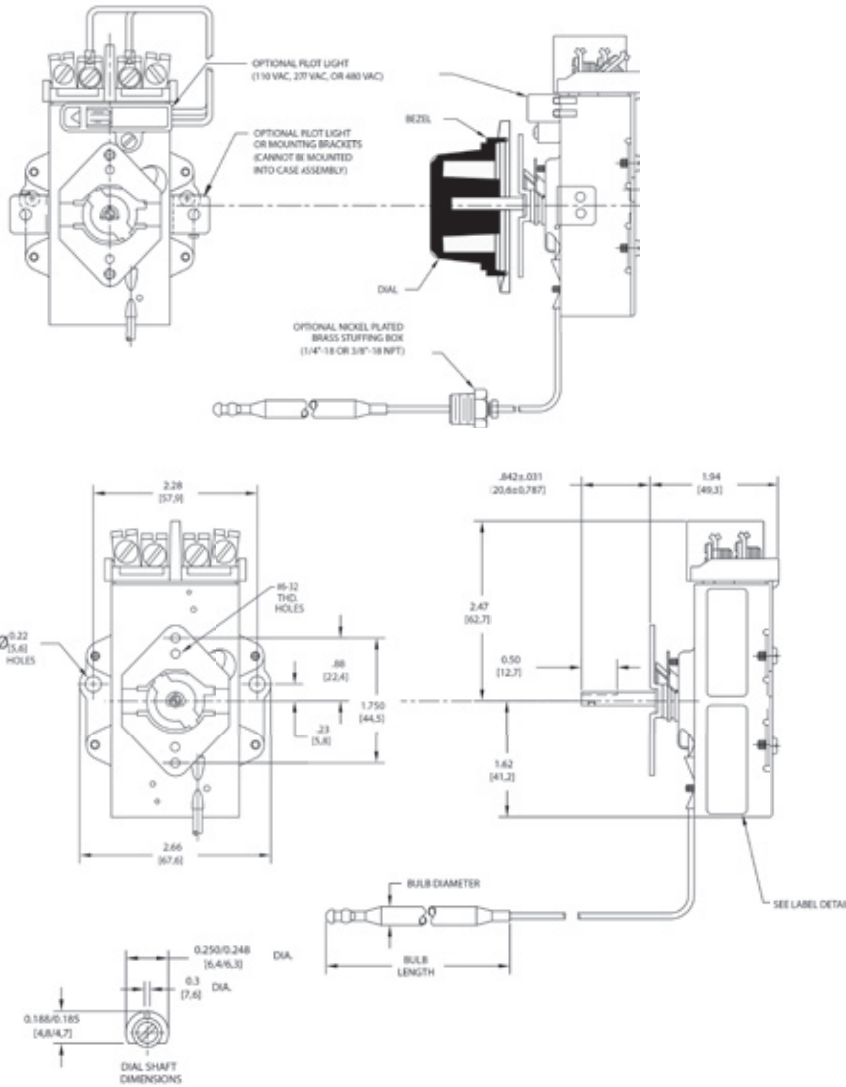




Robertshaw[®]

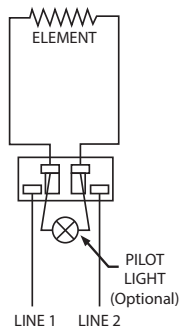
Product Drawings

Product Dimensions - Dimensions are inches and [millimeters].

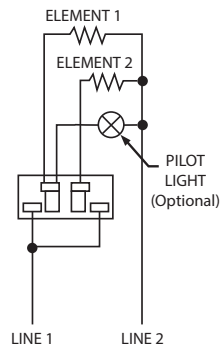


Wiring Diagram

SINGLE ELEMENT
DOUBLE POLE
SINGLE PHASE



TWO ELEMENTS
SINGLE POLE
SINGLE PHASE





Robertshaw®



Scan for all models, literature and cross reference



4350-028

GAS THERMOSTATS

4350 Series

The Robertshaw® 4350 Series Gas Thermostat is a combination gas cock and by-pass type thermostat. It is available with both by-pass and pilot adjustments. With these thermostats, the gas is turned on and the temperature setting made with a single turn of the dial. The 4350 Series is available for a wide variety of applications, especially ranges and griddles.

Features and Benefits

- Highly adaptable because of multiple orientations and number of outlets
- Mounted, via flange nipple, above or below the manifold
- Available with various temperature ranges
- Front adjustment for pilot and by-pass
- Modulating seat action
- Bulb and capillary available in copper, nickel plated copper and stainless steel

Specifications

Part Numbers	Description	Max Inlet Pressure	Main Outlet Size	Main Outlet Position	Housing Rotated	Pilot Outlet	Flange Type	Capillary Length	Sensing Bulb	Capacity (Natural Gas)	Temperature Range
4350-015	BJWA Control for Ovens	0.5 PSI	1/4" Pipe	B	180°	Plug	Narrow	48"	3/16" x 11-3/16"	70,000 BTU/HR	250°F to 500°F (121°C to 260°C)
4350-027	BJWA Kit for Ovens	0.5 PSI	1/4" Pipe	A, B, C, D	No	Yes	Wide	48"	3/16" x 11-3/16"	70,000 BTU/HR	250°F to 550°F (121°C to 288°C)
4350-028	BJWA Kit for Griddles	0.5 PSI	1/4" Pipe	A, B, C, D	No	Yes	Wide	36"	3/16" x 8-5/8"	70,000 BTU/HR	150°F to 400°F (66°C to 205°C)
4350-029	BJWA Kit for Ovens	0.5 PSI	7/16" Tubing	C	No	Yes	Wide	48"	3/16" x 11-3/16"	70,000 BTU/HR	250°F to 550°F (121°C to 288°C)
4350-040	BJWA Control for Ovens	0.5 PSI	1/4" Pipe	D	90° Clockwise	Plug	Narrow	48"	3/16" x 11-3/16"	70,000 BTU/HR	250°F to 550°F (121°C to 288°C)
4350-127	BJWA Kit for Ovens	0.5 PSI	1/4" Pipe	A, B, C, D	180°	No	Wide	48"	3/16" x 11-3/16"	70,000 BTU/HR	250°F to 550°F (121°C to 288°C)
4350-128	BJWA Kit for Griddles	0.5 PSI	1/4" Pipe	A, B, C, D	180°	No	Wide	48"	3/16" x 8-5/8"	70,000 BTU/HR	150°F to 400°F (66°C to 205°C)

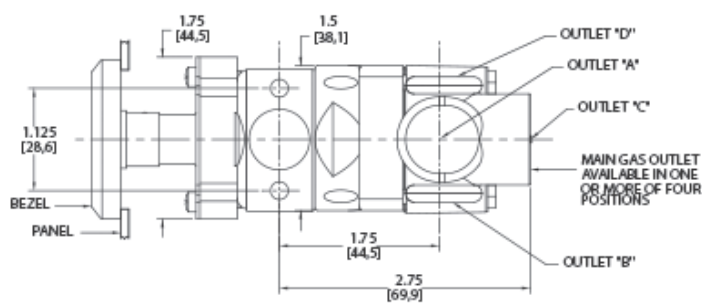
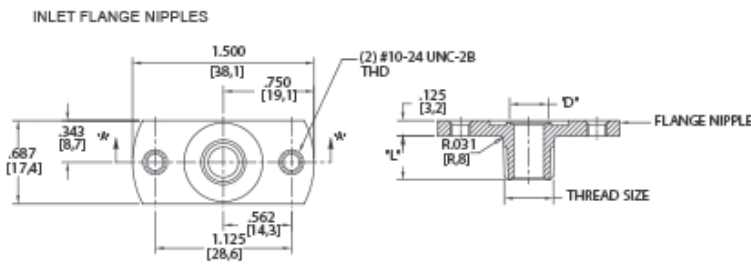
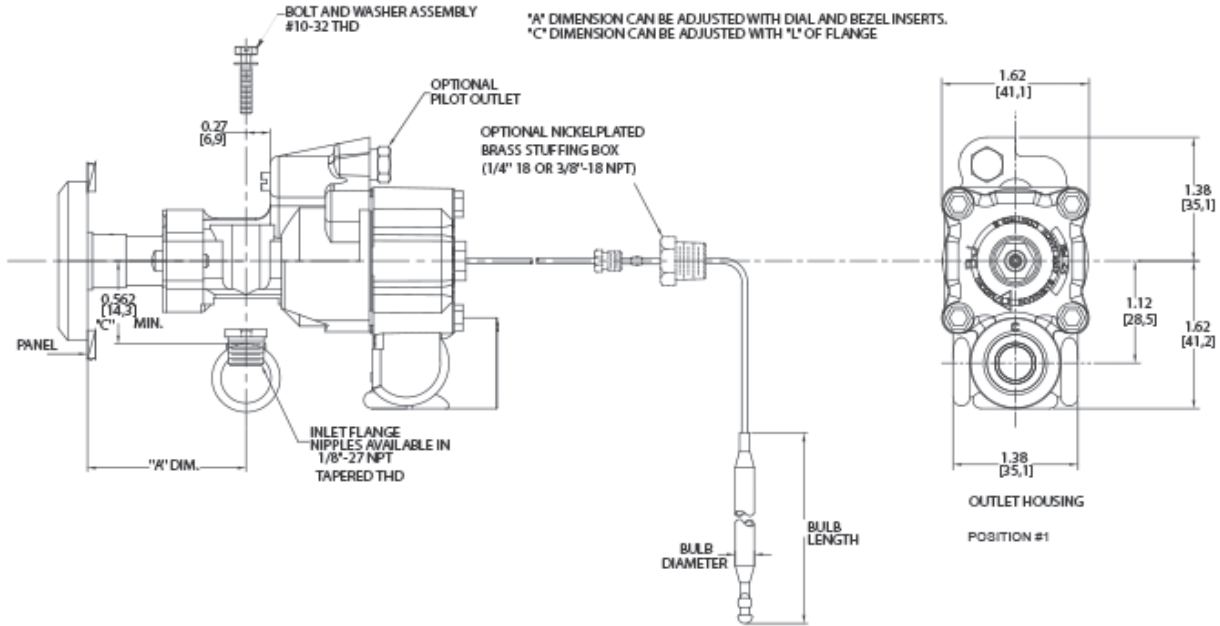




Robertshaw[®]

Product Drawings

Product Dimensions - Dimensions are inches and [millimeters].





Robertshaw®



Scan for all models, literature and cross reference



4290-008

GAS THERMOSTATS

4290 Series

The Robertshaw® 4290 Series Gas Thermostat is a snap-acting hydraulic thermostat and used to provide temperature control by interrupting gas flow to the burner. The 4290 Series gas thermostat is available for a wide variety of applications including small ovens, griddles, brooders, warming cabinets, and fryers.

Features and Benefits

- Capable up to 30,000 BTUs
- Available in various temperature ranges, with temperature control up to 600°F (316°C)
- Snap-acting from OFF position to full gas flow
- Adjustable bypass key and bypass settings are optional
- Applicable to use with high capacity gas operated diaphragm valves (700-800 Series)
- Adapts to limited mounting space
- Bulb and capillary assemblies supplied in nickel plated copper or stainless steel
- Dials in heat resistant plastic are included
- Ambient temperature is 300°F (149°C)

Specifications

Part Numbers	Description	Capillary Length	Bulb Size	Inlet Size	Outlet Size	Stuffing Box	Pilot Outlet	Stem Flat	Temperature Range
4290-006	GS Gas Snap-Action Hydraulic Control	30"	3/8" x 5-3/8" Nickel	1/4" Tubing	1/4" Tubing	1/4" Nickel	NA	Down	200°F to 410°F (93°C to 210°C)
4290-008	GS Gas Snap-Action Hydraulic Control	60"	3/8" x 4-1/2" Nickel	3/8" Pipe	3/8" Pipe	3/8" Nickel	NA	Down	60°F to 250°F (16°C to 121°C)
4290-020	GS Gas Snap-Action Hydraulic Control	36"	3/16" x 13" Nickel	1/4" Tubing	1/4" Tubing	NA	NA	Down	200°F to 550°F (93°C to 288°C)

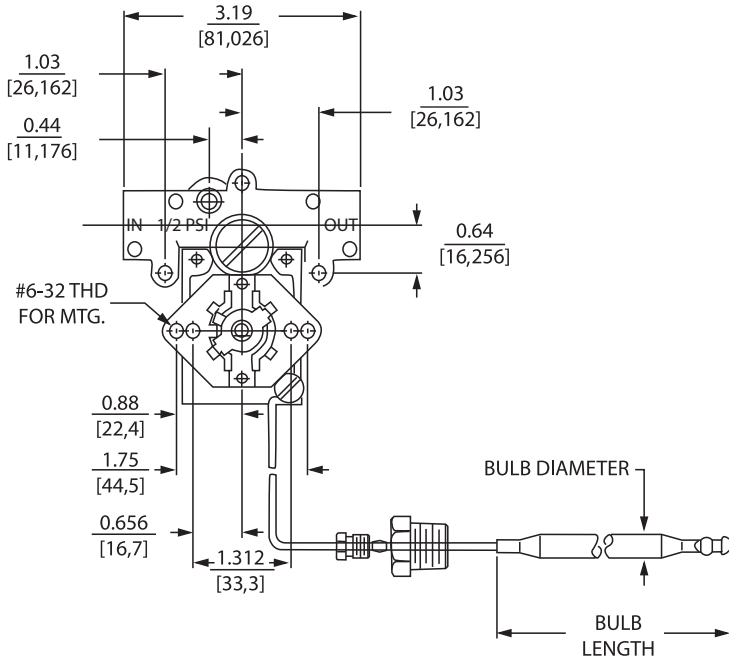




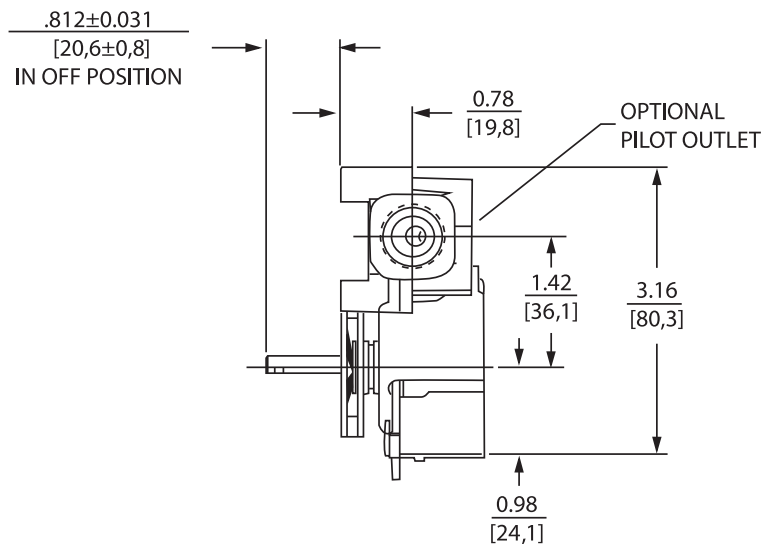
Product Drawings

Product Dimensions - Dimensions are inches and [millimeters].

Front View



Right View



Robertshaw[®]

1 Year
Limited
Warranty



Robertshaw®



Scan for all models, literature and cross reference



4200-005
Type #2 Body



4200-025
Type #1 Body

GAS THERMOSTATS

4200 Series

The Robertshaw® 4200 Series Gas Thermostat is a heavy-duty, high capacity gas thermostat. These units are available with modulating only or with modulating snap-acting bypass. Both pilot and bypass adjustments are provided. Pilot outlets and customized settings are optional. They are available for a wide variety of applications such as deck ovens, convection ovens, baking ovens, and ranges.

Features and Benefits

- Heat resistant materials and rugged design
- The pilot and bypass keys are accessible and the pilot and keys are slotted for easy adjustment from the front of the control
- Provides temperature control on most gas appliance systems
- Allows for low temperature control
- Modulates the main gas supply and controls the bypass gas with a snap under the same thermostatic action
- Bulb and capillary assemblies supplied in copper, nickel plated copper or steel
- 4-Way mounting position
- RoHS Compliant

Specifications

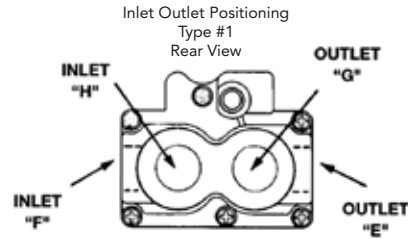
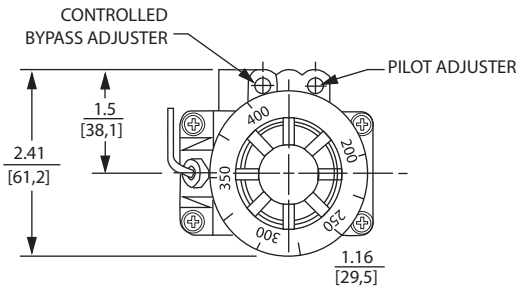
Part Numbers	Description	Inlet Side "F"	Inlet Rear "H"	Outlet Side "E"	Outlet Rear "G"	Pilot Outlet	Capillary Length	Bulb Size	Temperature Range
4200-005	FDO Gas Thermostat, Body Type #2	1/2" Pipe	NA	1/2" Pipe	NA	Side	48"	3/16" x 14-3/4" Nickel	150°F to 550°F (66°C to 288°C)
4200-007	FDO Gas Thermostat Body Type #1	1/2" Pipe	NA	1/2" Pipe	NA	Side	48"	1/4" x 8-7/16" Nickel	150°F to 550°F (66°C to 288°C)
4200-011	FDTO Gas Thermostat, Body Type #2	1/2" Pipe	NA	1/2" Pipe	NA	Side	48"	3/16" x 14-3/4" Nickel	200°F to 550°F (93°C to 288°C)
4200-025	FDO Gas Thermostat Uni-Kit® Body Type #1	3/8" Pipe	3/8" Pipe	3/8" Pipe	3/8" Pipe	Side & Rear	54"	3/16" x 14-3/4" Nickel	150°F to 550°F (66°C to 288°C)
4200-026	FDTO Gas Thermostat Uni-Kit Body Type #1	3/8" Pipe	3/8" Pipe	3/8" Pipe	3/8" Pipe	Side & Rear	54"	3/16" x 14-3/4" Nickel	200°F to 550°F (93°C to 205°C)
4200-503	FDTH Gas Thermostat Body Type #1	1/2" Pipe	NA	1/2" Pipe	NA	Side	48"	3/16" x 15-3/8" Nickel	300°F to 650°F (149°C to 343°C)
4200-505	FDTH Gas Thermostat, Body Type #2	1/2" Pipe	NA	1/2" Pipe	NA	Side	48"	3/16" x 14-3/4" Nickel	300°F to 650°F (149°C to 343°C)
4200-508	FDH Gas Thermostat, Body Type #2	1/2" Pipe	NA	1/2" Pipe	NA	Side	48"	3/16" x 14-3/4" Nickel	300°F to 650°F (149°C to 343°C)



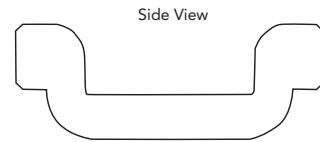
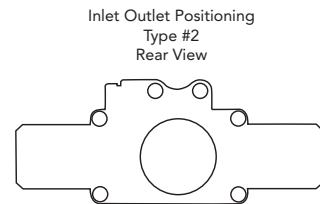
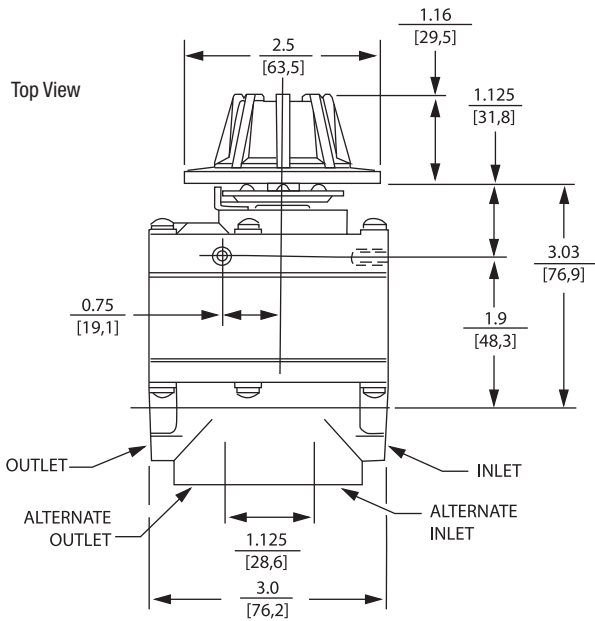
Product Drawings

Product Dimensions - Dimensions are inches and [millimeters].

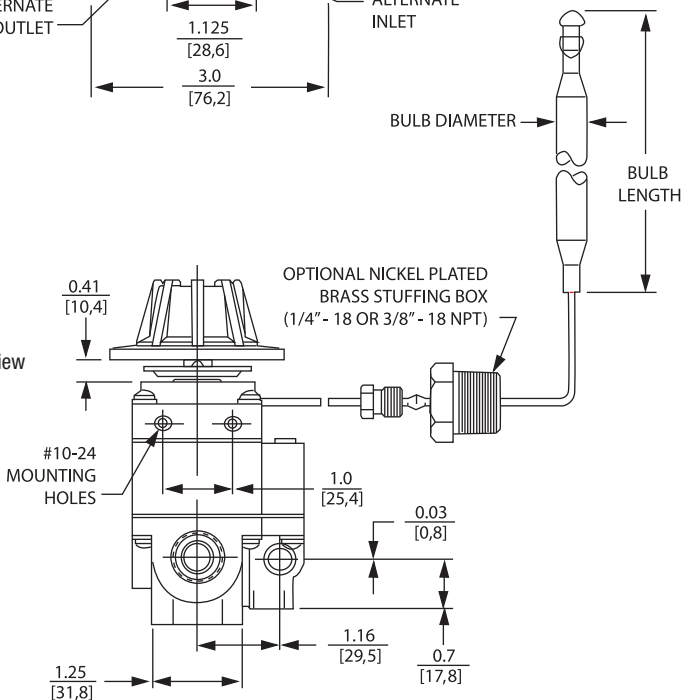
Front View



Top View



Side View



Robertshaw[®]

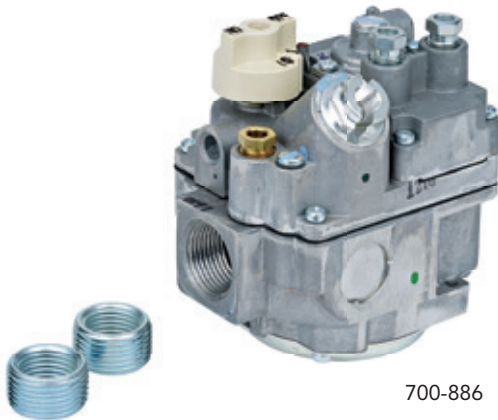
1 Year
Limited
Warranty



Robertshaw®



Scan for all models, literature and cross reference



700-886

GAS VALVES - BLEED CONTROL

700 Series

The Robertshaw® Unitrol® 700 Series Bleed Control Gas Valves combine a manual main and pilot gas valve, a separate automatic safety pilot valve, pilot adjustment valve, and a diaphragm valve. The regulated models also feature "straight line" gas pressure regulation. Robertshaw diaphragm gas valves are single function, and are excellent replacements for solenoid gas valves. Models are available with or without a gas cock and regulated or non-regulated. Standard features include pilot outlet, pilot gas filter and pilot adjustment key.

Features and Benefits

- Normally closed solenoid
- Compact size with high flow rates
- Standard NEMA terminals
- Inlet filtered screen
- Various gas types: natural, manufactured, mixed, LP, and LP/air mixtures
- Multiple actuators available
- RoHS compliant

Specifications

Part Numbers	Description	Capacity	Inlet Size	Outlet Size	Pressure Regulation	Reducer Bushings Included	Comments
700-804	Bleed Control Gas Valve	305,000 BTU	3/4"	3/4"	3.5" WC Natural Gas	NA	Has slow opening feature. Which can be removed and is Thermocouple driven
700-886	Bleed Control Gas Valve	305,000 BTU	3/4"	3/4"	3.5" WC Natural Gas	1/2" (x2)	Thermopile driven
700-887	Bleed Control Gas Valve	240,000 BTU	1/2"	1/2"	4.0" WC Natural Gas	NA	Thermopile driven



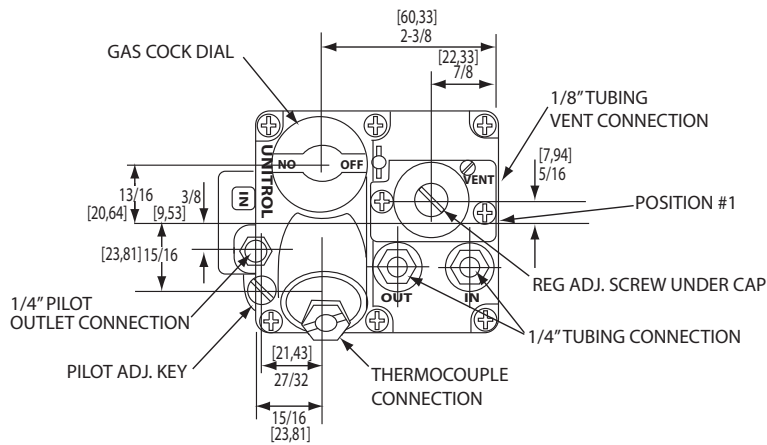
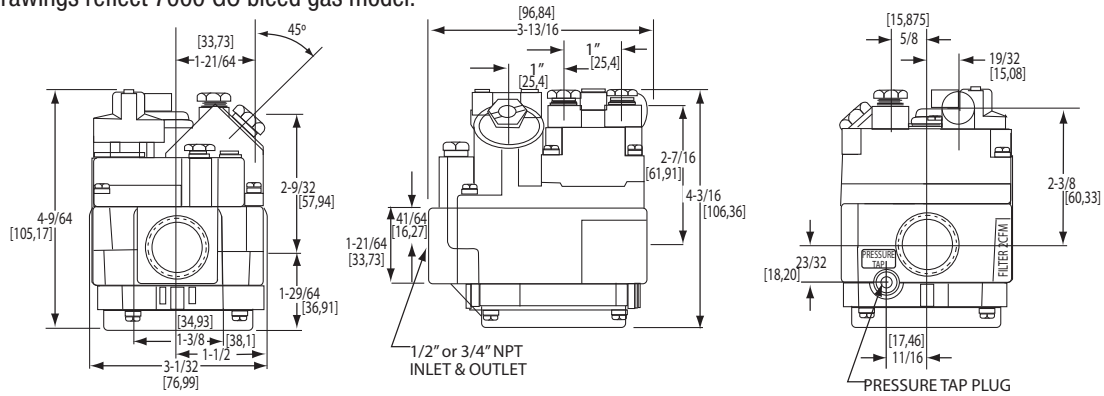


Robertshaw[®]

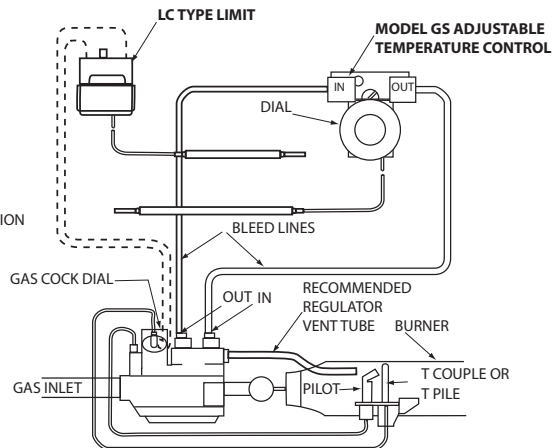
Product Drawings

Product Dimensions - Dimensions are inches and [millimeters].

Drawings reflect 7000 GO bleed gas model.



SCHEMATIC SKETCH SHOWS ARRANGEMENT OF THERMOSTATS AND UNITROL 7000BGO IN TYPICAL FRYER APPLICATION





Robertshaw®



Scan for all models, literature and cross reference



4075-029



4075-200

GAS VALVES - SOLENOID

4075 Series

The Robertshaw® 4075 Series Gas Solenoid is designed to control the flow of gas in cooking appliances. Both single FJT and dual FJTDO models are available for a wide variety of applications such as ovens, griddles and fryers.

Features and Benefits

- Normally closed solenoid
- Multiple inlet/outlet configurations
- 1/8" side pilot outlets available
- Compact size with high flow rates
- Standard NEMA terminals
- Inlet filtered screen
- Gas types: Natural, manufactured, fixed, LP and LP/air mixtures
- RoHS compliant
- AC rectification for silent operation

Specifications

Part Numbers	Description	Inlet	Outlet	Pilot Outlet	Max Pressure	Capacity	Ambient Temperature	Electrical Rating	Comments
4075-029	FJT Single Gas Solenoid Valve	3/8" Pipe	3/8" Pipe	Left and Right	0.5 PSI	119,000 BTU	-40°F to 275°F (-40°C to 135°C)	24 / 120 / 240 Volts @ 50/60 Hz	Includes (2) 1/8" plugs
4075-200	FJTDO Dual Gas Solenoid Valve	3/8" Pipe	3/8" Pipe	NA	0.5 PSI	165,000 BTU both 110,000 BTU each	-40°F to 275°F (-40°C to 135°C)	24 / 120 / 240 Volts @ 50/60 Hz	0.10 Amp Coil

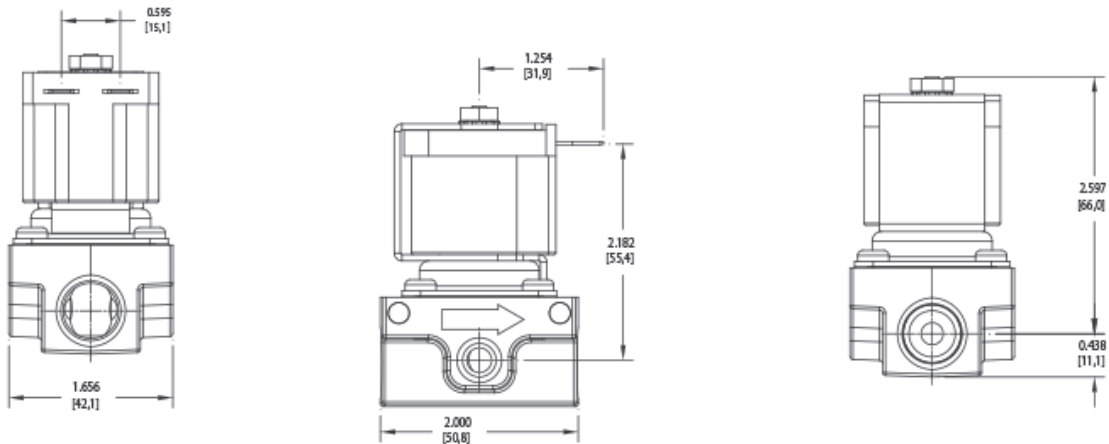




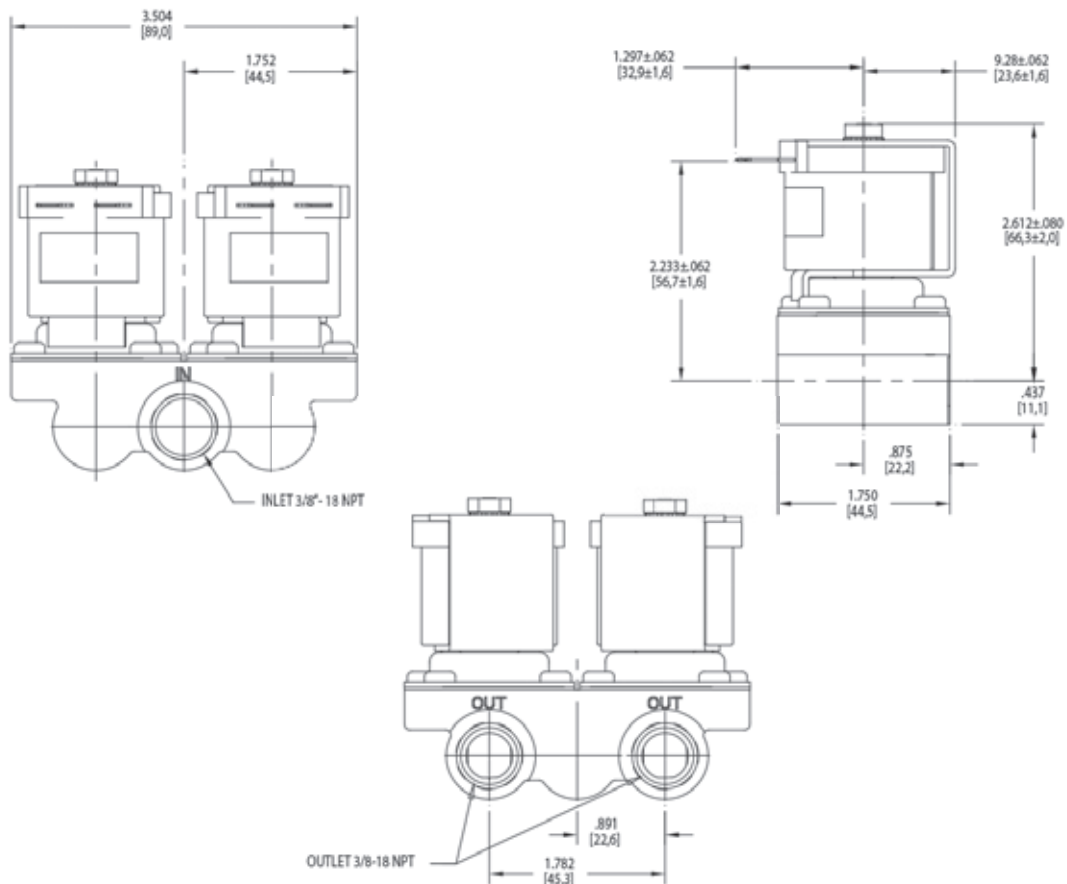
Product Drawings

Product Dimensions - Dimensions are inches and [millimeters].

Single



Dual



Robertshaw[®]

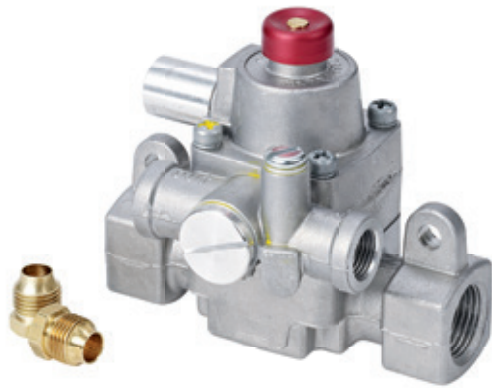
1 Year
Limited
Warranty



Robertshaw®



Scan for all models, literature and cross reference



1720-004



1720-801

GAS VALVES - THERMOMAGNETIC SAFETY

1720 Series

The Robertshaw® 1720 Series Thermomagnetic Safety Valve is a control used to cut off the flow of gas to the burner in the event of a pilot outage. The magnet assembly is energized by voltage generated by a thermocouple that is heated by the pilot flame. When this flame is extinguished, the thermocouple voltage decreases until a spring overcomes the magnetic force and closes off both the pilot and main gas. This control can be used for commercial and residential ovens, infrared heaters, chicken and pig brooders, recreational vehicle gas appliances and many more applications requiring automatic safety valves.

Features and Benefits

- 300°F (149°C) ambient temperature rated and 350°F (177°C) versions available
- J models available with separate pilot inlet/outlet tube connections
- K models are pilot outlet only
- Compatible with other Robertshaw models such as the BJWA, FD, and GS series thermostats
- RoHS compliant

Specifications

Part Numbers	Description	Body Inlet & Outlet	Head Pilot Inlet & Outlet	Ambient Temperature	Max Pressure
1720-004	TS11J Complete Magnet and Body Assembly	7/16" Tube	1/4" Tube	32°F to 300°F (0°C to 149°C)	0.5 PSI
1720-005	TS11J Complete Magnet and Body Assembly	1/4" Pipe	3/16" Tube	32°F to 300°F (0°C to 149°C)	0.5 PSI
1720-007	TS11J Complete Magnet and Body Assembly	1/2" Pipe	1/4" Tube	32°F to 300°F (0°C to 149°C)	0.5 PSI
1720-008	TS11J Complete Magnet and Body Assembly	1/4" Pipe	1/4" Tube	32°F to 300°F (0°C to 149°C)	0.5 PSI
1720-801	TS11J J Magnet Head Only - Inlet and Outlet	NA	Kit, 1/8" Pipe, 3/16" Tubing, 1/4" Tubing	32°F to 300°F (0°C to 149°C)	0.5 PSI
1720-802	TS11K K Magnet Head Only - Outlet Only	NA	Kit, 1/8" Pipe, 3/16" Tubing, 1/4" Tubing	32°F to 300°F (0°C to 149°C)	0.5 PSI



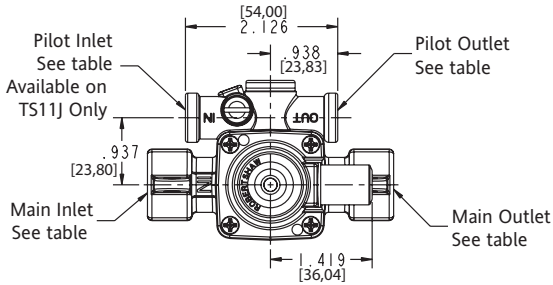


Robertshaw[®]

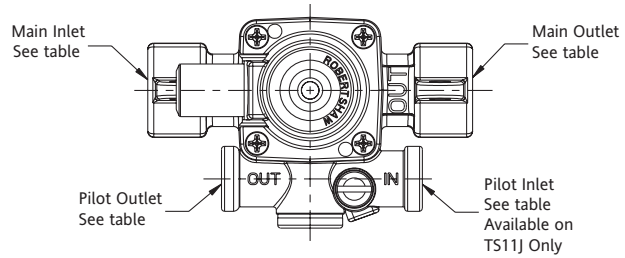
Product Drawings

Product Dimensions - Dimensions are inches and [millimeters].

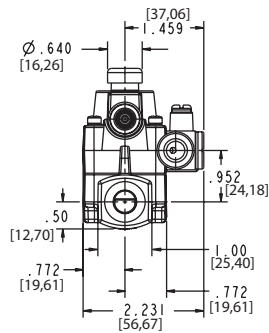
Top



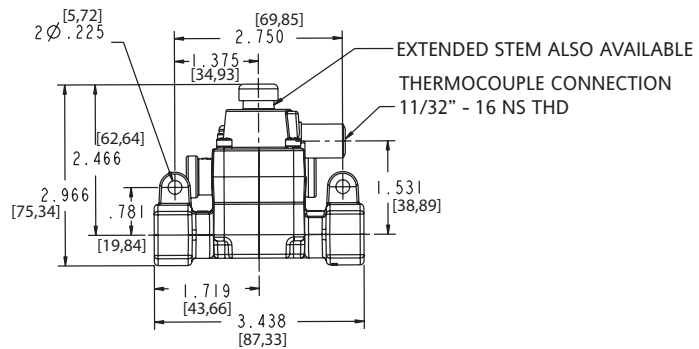
Top (rotated 180°)



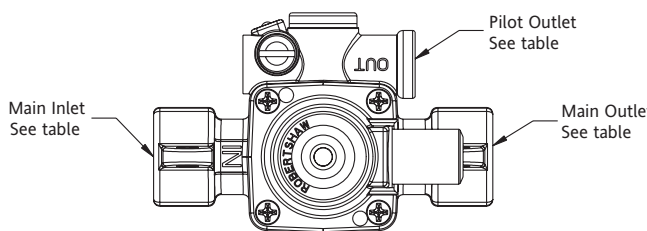
Side



Front



K Model Top with No Pilot Inlet



1 Year Limited Warranty



Robertshaw®



Scan for all models, literature and cross reference



HOT SURFACE IGNITORS

41-200 Series

The Robertshaw® 41-200 Series Hot Surface Ignitors are engineered to meet all your gas range and oven needs. These ignitors are used in the ranges of most major appliance original equipment manufactures. In addition, most ignitors are designed to match the Robertshaw bi-metal gas valves.

Features and Benefits

- High physical and thermal strength
- Easy mounting
- Silent ignition
- Kits include two (2) porcelain nuts

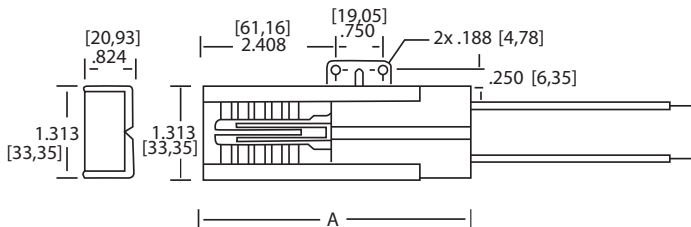
Specifications

Part Numbers	Description	Length A	Lead Length	Type	Amp Rating	Operating Voltage
41-204	Hot Surface Ignitor	4-1/2"	14-1/2"	501A	3.2 to 3.6 A	120V AC
41-205	Hot Surface Ignitor	3-1/2"	19"	501A	3.2 to 3.6 A	120V AC
41-206	Hot Surface Ignitor, No Shield, 5 1/2" Ceramic	7-1/4"	8-3/8"	501	3.2 to 3.6 A	120V AC
41-209	Hot Surface Ignitor with Plug Adaptor	3-1/2"	16-3/4"	501A	3.2 to 3.6 A	120V AC
41-224	Hot Surface Ignitor	NA	36"	401XM	1.4 to 2.1 A	24V AC

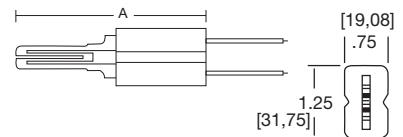
Product Drawings

Product Dimensions - Dimensions are inches and [millimeters].

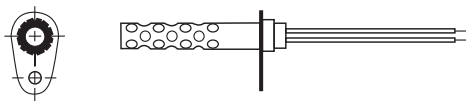
Type 501A



Type 501



Type 401 XM



1 Year Limited Warranty



Robertshaw[®]



Scan for all models, literature and cross reference

1 Year Limited Warranty

OVEN SPARK IGNITION MODULES

41-500 Series

The Robertshaw[®] 41-521 is an 0+1 Oven Spark Ignition Module designed for oven re-ignition. A spark is generated for as long as the appropriate input terminal is energized.

Features and Benefits

- Spark generator with 2,000,000 sparks
- Strong dielectric strength tested up to 1500 Volts RMS at 60 Hz for one second
- Spark frequency ranges from 1.0 to 5.0 Hz
- Humidity tested to 90% RH relative humidity for 48 hours
- AGA listed



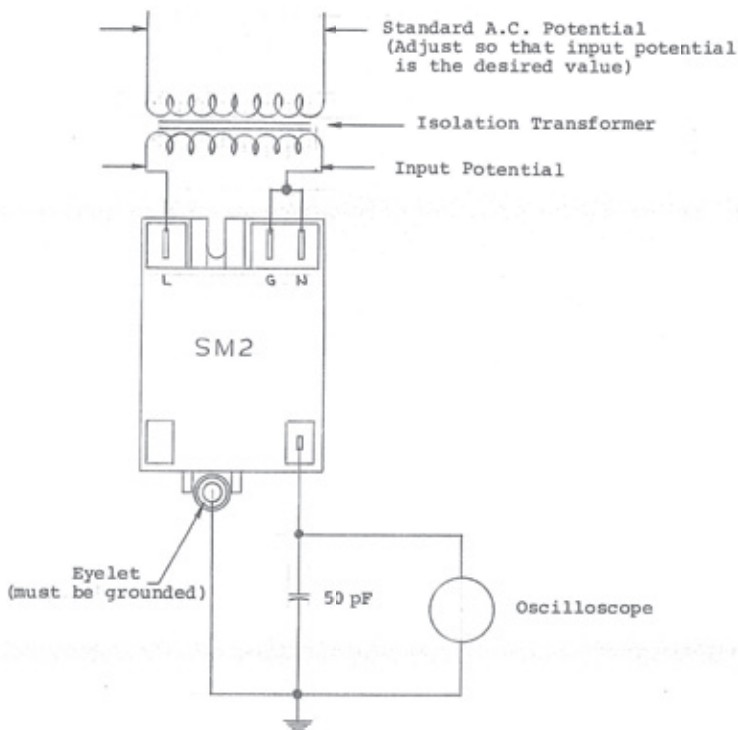
41-521

Specifications

Part Numbers	Description	Spark Frequency	Spark Gap	Ambient Temperature	Electrical Rating
41-521	SM2 Electronic Re-Ignition Oven Spark Module	2.5 Hz to 4.5 Hz	1/8" max	32°F to 200°F (0°C to 93°C)	120V AC, 18 kV peak across 50 pF (picoFarad) capacitance load

Product Drawings

Product Dimensions - Dimensions are inches and [millimeters].





Heating, ventilation and air conditioning contractors value quality performance products, while consumers welcome dependable comfort.

With Robertshaw® Heating products, both are achievable while delivering productivity and environmental responsible results. Robertshaw Heating products offer kitted and universal solutions designed to replace hundreds of products.

Gas Valves	B2
Water Heating Gas Valves.....	B15
Heating Kits.....	B16
Ignition Controls	B18
Ignitors.....	B28
Pilots	B34
Thermocouples.....	B36
Thermopiles	B38
Air Pressure Sensing Switches	B40
Heating Accessories.....	B42



Heating





Robertshaw®



Scan for all models, literature and cross reference



700-059

GAS VALVES

700 Series - Pilot, Hot Surface and Direct Spark

The Robertshaw® 700 Series Universal Gas Valves are designed for intermittent pilot ignition applications. These universal models include all the necessary parts to adapt the valves to direct spark or hot surface applications. Each valve incorporates a manual valve, pilot valve, and a main gas pressure regulator (optional by model). These valves are designed for many residential and commercial applications such as central heating units, wall heaters, boilers and mobile home furnaces.

Features and Benefits

- Universal models with pilot, hot surface and direct spark ignition systems
- Maximum inlet pressure 14" WC (0.5 PSI)
- Ambient temperature of -40°F to 175°F
- Standard NEMA terminals
- Inlet filtered screen
- Various gas types: natural, manufactured, mixed, LP, and LP/air mixtures
- Multiple actuators available
- RoHS compliant

Specifications

Part Numbers	Description	Capacity	Inlet Size	Outlet Size	Pressure Regulator Setting	Electrical Rating	Comments
700-048	Universal Model	720,000 BTU	1"	1"	3.5" WC Natural Gas	24V AC @ 60 Hz	High capacity
700-049	Universal Model	300,000 BTU	1/2"	1/2"	3.0" WC Natural Gas	24V AC @ 60 Hz	Includes pilot plug
700-056	Universal Model	350,000 BTU	3/4"	3/4"	3.5" WC Natural Gas	24V AC @ 60 Hz	Straight-thru with slow opening feature for soft ignition. Can be field removed.
700-057	Universal Model	720,000 BTU	1"	1"	4.0" WC Natural Gas	24V AC @ 60 Hz	Straight-thru
700-059	Universal Model	720,000 BTU	1"	1"	4.0" WC Natural Gas	24V AC @ 60 Hz	Straight-thru with slow opening feature for soft ignition. Can be field removed.



1 Year Limited Warranty

GAS VALVES

700 Series - Millivolt

The Robertshaw® 700 Series Millivolt Gas Valves are wall thermostat actuated combination controls which provide installation flexibility from furnaces to swimming pool applications. The complete line of 700-500 millivolt gas valves offers a wide range of replacements from small capacity 3/8" pipe to high capacity 1" pipe up to 720,000 BTU usage.

Features and Benefits

- Gas cock dial marking Off - Pilot - On
- Pilot outlet 1/4" tubing
- Ambient temperature of -40°F to 175°F
- Terminal type combination screw/spade
- Maximum inlet pressure 14" WC (0.5 PSI)
- Standard NEMA terminals
- Inlet filtered screen
- Various gas types: natural, manufactured, mixed, LP, and LP/air mixtures
- RoHS compliant



Robertshaw®



Scan for all models, literature and cross reference

Specifications

Part Numbers	Description	Capacity	Inlet Size	Outlet Straight-Thru (FPT)	Outlet Side (FPT) With Plugs	Reducer Bushing (NPT)	Pressure Regulator Setting	Electrical Rating	Compatible with
700-502	Millivolt	100,000 BTU	1/2"	1/2"	1/2"	2	3.5" WC Natural Gas	250mV to 750mV	Coaxial and two lead thermopile
700-504	Millivolt	240,000 BTU	1/2"	3/4"	1/2"	1	3.5" WC Natural Gas	250mV to 750mV	Coaxial and two lead thermopile
700-505	Millivolt Nonregulated	300,000 BTU	3/4"	3/4"	Straight-thru	2	NA	250mV to 750mV	NA
700-506	Millivolt	300,000 BTU	3/4"	3/4"	Straight-thru	2	3.5" WC Natural Gas	250mV to 750mV	Coaxial and two lead thermopile
700-511	Pool Heater	400,000 BTU	3/4"	3/4"	Straight-thru	2	Uni-Kit® Natural Gas	250mV to 750mV	Teledyne-Lars coaxial and two lead thermopile
700-515	Millivolt	485,000 BTU	3/4"	3/4"	Straight-thru	2	10.0" WC Natural Gas	250mV to 750mV	NA
700-516	Millivolt	240,000 BTU	1/2"	1/2"	Straight-thru	NA	4.0" WC Natural Gas	250mV to 750mV	NA



1 Year Limited Warranty



Robertshaw®



Scan for all models, literature and cross reference



700-402

GAS VALVES

700 Series - 24 Volt Combination

The Robertshaw® 700 Series 24 Volt Combination Gas Valves offer replacement flexibility. With capacities ranging to 720,000 BTU, three-position outlets and multi-positional capability, these combination gas valves offer unlimited replacement possibilities. The 24 Volt Uni-Kit® models are suitable for either natural or LP gas. The valve is factory set at 3.5" WC natural gas. A regulator cover plate is included to convert to LP gas.

Features and Benefits

- Gas cock dial marking Off - Pilot - On
- Pilot outlet 1/4" tubing
- Ambient temperature of -40°F to 175°F
- Combination screw/spade terminal type
- Maximum inlet pressure 14" WC (0.5 PSI)
- Standard NEMA terminals
- Inlet filtered screen
- Various gas types: natural, manufactured, mixed, LP, and LP/air mixtures
- Multiple actuators available
- RoHS compliant

Specifications

Part Numbers	Description	Capacity	Inlet Size	Outlet Size	Side Outlets	Pressure Regulator Setting	Electrical Rating	Comments
700-400	24 Volt Combination	240,000 BTU	1/2"	3/4"	Straight-thru	Uni-Kit® Natural Gas	24V AC @ 0.2 Amps, 12V DC @ 0.18 Amps	
700-402	24 Volt Combination	240,000 BTU	1/2"	3/4"	1/2"	Uni-Kit Natural Gas	24V AC @ 0.2 Amps, 12V DC @ 0.18 Amps	
700-406	24 Volt Combination	300,000 BTU	3/4"	3/4"	Straight-thru	Uni-Kit Natural Gas	24V AC @ 0.2 Amps, 12V DC @ 0.18 Amps	
700-409	24 Volt Combination	240,000 BTU	1/2"	1/2"	Straight-thru	3.5" WC Natural Gas	24V AC @ 0.2 Amps, 12V DC @ 0.18 Amps	Thermopile type safety magnet
700-426	24 Volt Combination	300,000 BTU	3/4"	3/4"	Straight-thru	3.5" WC Natural Gas	24V AC @ 0.2 Amps, 12V DC @ 0.18 Amps	Slow opening feature for soft ignition
700-442	24 Volt Combination	720,000 BTU	1"	1"	Straight-thru	3.5" WC Natural Gas	24V AC @ 0.2 Amps, 12V DC @ 0.18 Amps	Slow opening feature for soft ignition



1 Year Limited Warranty

GAS VALVES

700 Series - Line Voltage

The Robertshaw® 700 Series Line Voltage Gas Valves offer the same replacement flexibility as the 24 Volt combination controls. Line Voltage models are available in 120 and 240 Volts AC. Features include three-position outlets, multi-positional capability and capacities ranging up to 720,000 BTU.

Features and Benefits

- Slotted safety magnet
- Gas cock dial marking Off - Pilot - On
- Ambient temperature of -40°F to 175°F
- Pilot outlet 1/4" tubing
- Cover type for conduit connection
- Inlet filtered screen
- RoHS compliant



700-454

Robertshaw®



Scan for all models, literature and cross reference

Specifications

Part Numbers	Description	Capacity	Inlet Size	Outlet Straight-Thru (FPT)	Outlet Side (FPT) With Plugs	Reducer Bushings Included (NPT) 3/4" x 1/2"	Pressure Regulator Setting	Lead Length	Electrical Rating
700-452	Line Voltage Valve	240,000 BTU	1/2"	3/4"	1/2"	1	3.5" WC Natural Gas	32"	120V AC @ 0.034 Amps
700-454	Line Voltage Valve	300,000 BTU	3/4"	3/4"	Straight-thru	2	3.5" WC Natural Gas	32"	120V AC @ 0.034 Amps



1 Year Limited Warranty



Robertshaw®



Scan for all models, literature and cross reference



700-513

GAS VALVES

700 Series - Diaphragm/Solenoid

The Robertshaw® 700 Series Diaphragm/Solenoid Gas Valves are single function, diaphragm types and are excellent replacements for solenoid gas valves. Models are available with or without a gas cock, and in regulated or non-regulated configurations. Standard features include pilot outlet, pilot gas filter and pilot adjustment key. Valves can be mounted in any position except upside down. These valves do not have a safety magnet.

Features and Benefits

- Pilot outlet 1/4" tubing
- Maximum inlet pressure 14" WC (0.5 PSI)
- Ambient temperature of -40°F to 175°F
- Standard NEMA terminals
- Inlet filtered screen
- Various gas types: natural, manufactured, mixed, LP, and LP/air mixtures
- Multiple actuators available
- RoHS compliant

Specifications

Part Numbers	Description	Capacity	Inlet Size	Outlet Size	Side Outlets	Pressure Regulator Setting	Electrical Rating
700-422	24 Volt Diaphragm Solenoid	240,000 BTU	1/2"	3/4"	1/2"	3.5" WC Natural Gas	12V DC @ 0.18 Amps, 24V AC @ 0.2 Amps
700-513	Millivolt Diaphragm Solenoid without Gas Cock	240,000 BTU	1/2"	1/2"	Straight-thru	NA	250 - 750 mV



1 Year Limited Warranty

GAS VALVES

700 Series - 2-Stage 24 Volt

The Robertshaw® 2-Stage 24 Volt Gas Valves - standing pilot as well as intermittent pilot models - feature reliability, performance, flexibility and easy installation all in one compact control. These valves feature a manual valve (gas cock), inlet/outlet screens, pilot gas filter, and pilot adjustment key. Models have a slotted automatic pilot safety magnet to provide gas shut-off in case of a pilot outage.

Features and Benefits

- Pilot outlet 1/4" tubing
- Terminal type 1/4" quick-connect
- Ambient temperature of -40°F to 175°F
- Maximum inlet pressure 14" WC (0.5 PSI)
- Standard NEMA terminals
- Inlet filtered screen
- Various gas types: natural, manufactured, mixed, LP, and LP/air mixtures
- RoHS compliant



700-064

Robertshaw®



Scan for all models, literature and cross reference

Specifications

Part Numbers	Description	Capacity	Inlet Size	Outlet Size	Reducer Bushing (NPT)	Pressure Regulator Setting	Electrical Rating	Comments
700-064	Universal 2-Stage	720,000 BTU	1"	1"	2	1.3" WC low-fire, 3.5" WC high-fire for Natural Gas, 2.8" WC low-fire, 11.0" WC high-fire for LP	24V AC @ 50/60 Hz, 0.2 Amps low-fire, 0.4 Amps high-fire	Slow opening feature for soft ignition. Can be field removed.



1 Year Limited Warranty



Robertshaw®



Scan for all models, literature and cross reference



GAS VALVES

700 Series - Snap-Throttle Hydraulic

The Robertshaw® 700 Series Snap-Throttle Hydraulic Combination Gas Valves are thermostatically operated by a remote temperature sensing bulb. Models are available with single capillary or remote dial-in snap-action and snap-throttle types. Valves can be mounted in any position except upside down.

Features and Benefits

- Gas cock dial marking Off - Pilot - On
- Pilot outlet 1/4" tubing
- Ambient temperature of 32°F to 175°F
- Maximum inlet pressure 14" WC (0.5 PSI)
- Standard NEMA terminals
- Inlet filtered screen
- Various gas types: natural, manufactured, mixed, LP, and LP/air mixtures
- Multiple actuators available
- RoHS compliant

Specifications

Part Numbers	Description	Capacity	Inlet Size	Outlet Side (FPT) With Plugs	Pressure Regulator Setting	Capillary Length	Bulb Outer Diameter	Bulb Length	Dial Temperature	Remote Temperature
700-205	Snap-Throttle Hydraulic	100,000 BTU	1/2"	1/2"	3.5" WC Natural Gas	36"	1/4"	8"	58°F to 90°F	45°F to 95°F



1 Year Limited Warranty

GAS VALVES

700 Series - Actuators

The Robertshaw® 700 Series Gas Valves are the industry standard with capacity ranges from 5,000 to 1,150,000 BTUs. Several actuator types are available depending upon the application such as 24 Volts, Line Voltage, Millivolt and Hydraulic.



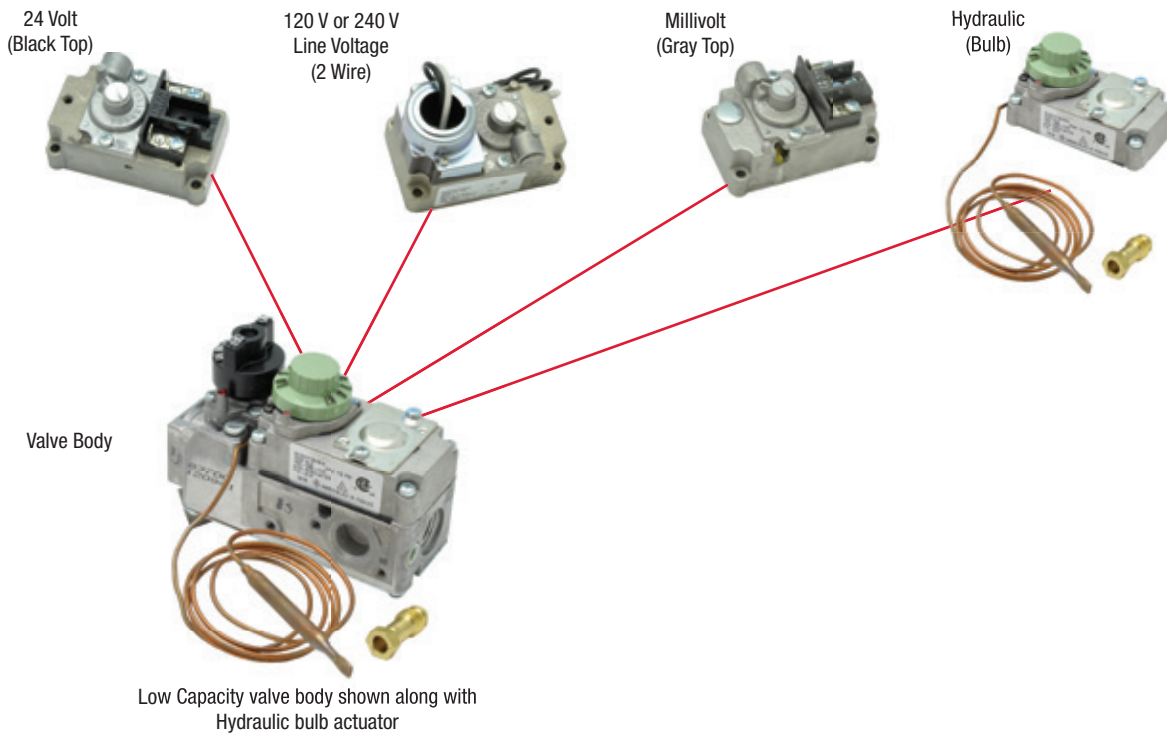
Standard 700 shown with Millivolt gray top actuator

Robertshaw®

Actuators available for 700 series gas valves

Actuator	Model	Ambient Temperature	Operating Temperature	Power	Current	NEC
12 Volt DC	7000E, E12	-40°F To 175°F (-40°C To 80°C)	NA	2.2 Watts	0.18 Amps @ 12V DC	Class 2
24 Volt	7000E	-40°F To 175°F (-40°C To 80°C)	NA	5 Watts	0.18 Amps @ 12V DC	Class 2
Line Voltage	7000E120 Or 7000E240	-40°F To 175°F (-40°C To 80°C)	NA	4 Watts	0.034 Amps @ 120V 0.017 Amps @ 240V	Class 1
Millivolt	7000MV	-40°F To 225°F (-40°C To 107°C)	NA	Pull-In Voltage 100mV Drop-Out Voltage 15mV	NA	NA
Hydraulic	7000S	32°F To 175°F	Std: 58°F To 90°F (14°C To 32°C) Hi: 100°F To 250°F (38°C To 120°C)	NA	NA	NA

Note: All the above models are available in regulated (R), high/low (RB) or convertible (RC).

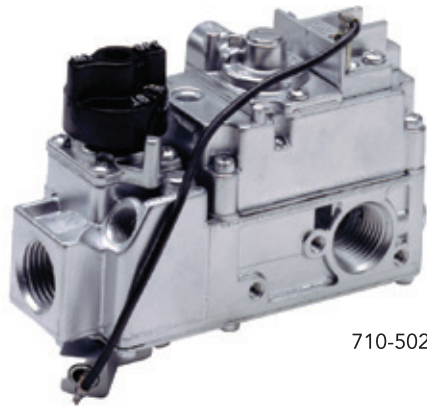




Robertshaw®



Scan for all models, literature and cross reference



710-502

GAS VALVES

710 Series - Low Capacity

The Robertshaw® 710 Series Low Capacity Gas Valves feature an extremely compact control designed for low capacity and limited space applications. Features include three-position outlets, multi-positional capability and component replaceability.

Features and Benefits

- Low capacity with 3-13/16" H x 4-21/32" L x 1-29/32" W dimensions
- Gas cock dial marking Off - Pilot - On
- Ambient temperature of -40°F to 175°F
- Pilot outlet 1/4" tubing
- Maximum inlet pressure 14" WC (0.5 PSI)
- Standard NEMA terminals
- Inlet filtered screen
- Various gas types: natural, manufactured, mixed, LP, and LP/air mixtures
- Multiple actuators available
- RoHS compliant





Specifications

Part Numbers	Description	Application	Capacity	Inlet Size	Outlet Size	Reducer Bushing (NPT)	Pressure Regulator Setting
710-203	Hydraulic Snap-Action Low Capacity	Recreational vehicles	70,000 BTU Natural Gas, 112,000 BTU LP	1/2"	1/2"	(2) 1/2" x 3/8"	NA
710-205	Hydraulic Snap-Action Low Capacity	Wall furnaces	70,000 BTU Natural Gas, 112,000 BTU LP	1/2"	1/2"	(2) 1/2" x 3/8"	3.5" WC Natural Gas
710-402	24 Volt Low Capacity	Wall furnaces	70,000 BTU	1/2"	1/2"	(2) 1/2" x 3/8"	3.5" WC Natural Gas
710-501	Millivolt Low Capacity	Space heaters	70,000 BTU	1/2"	1/2"	(2) 1/2" x 3/8"	NA
710-502	Millivolt Low Capacity	Space heaters	70,000 BTU	1/2"	1/2"	(2) 1/2" x 3/8"	3.5" WC Natural Gas
710-503	Millivolt Low Capacity	Fireplace control	70,000 BTU	1/2"	3/8"	NA	Hi-Lo Adjustable 1.7" to 3.5" WC Natural Gas
710-511	Millivolt Low Capacity	Fireplace control	70,000 BTU	1/2"	3/8" Straight-thru	NA	Hi-Lo Adjustable 1.7" to 3.5" WC Natural Gas

Specifications continued

Part Numbers	Capillary Length	Electrical Rating	Comments
710-203	36"	NA	
710-205	36"	NA	
710-402	NA	24V DC @ 0.2 Amps, 12V AC @ 0.18 Amps	
710-501	NA	250mV to 750mV	Use two lead thermopiles only
710-502	NA	250mV to 750mV	Use two lead thermopiles only
710-503	NA	250mV to 750mV	Use two lead thermopiles only
710-511	NA	250mV to 750mV	Special dropout safety magnet to meet Canadian specifications used with quick-dropout pilot assembly 1819-100. Use two lead thermopiles only.

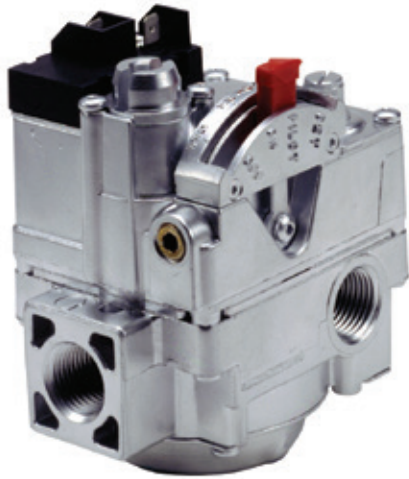
1 Year Limited Warranty



Robertshaw®



Scan for all models, literature and cross reference



720-402

GAS VALVES

720 Series - 24 Volt Dual

The Robertshaw® 720 Series 24 Volt Dual Gas Valve is a six-function gas valve incorporating a manual valve, safety shut-off magnet, dual automatic valves, main gas regulator, and pilot adjustment. Models are available with and without a pressure regulator. Uni-Kit® models are factory set at 3.5" WC for natural gas, but can be converted to LP by installing the regulator conversion kit included.

The wiring connections, manual selector and adjustments are easily accessible on top of the valve. With a 3-9/16" swing radius, the 720 Series lends itself well to replacing many OEM valves. Valve can be mounted in any position except upside down.

Features and Benefits

- Gas cock dial marking Off - Pilot - On
- Pilot outlet 1/4" tubing
- Ambient temperature of -40°F to 175°F
- Combination screw/spade terminal type
- Maximum inlet pressure 14" WC (0.5 PSI)
- Standard NEMA terminals
- Inlet filtered screen
- Various gas types: natural, manufactured, mixed, LP, and LP/air mixtures
- Multiple actuators available
- RoHS compliant

Specifications

Part Numbers	Description	Capacity	Inlet Size	Outlet Size	Side Outlets	Pressure Regulator Setting	Reducer Bushings Included (NPT)	Reducer Bushings Included (NPT)	Electrical Rating	Comments
720-400	24 Volt Dual	150,000 BTU	1/2"	3/4"	None	Uni-Kit® Natural Gas	1 3/4" x 1/2"	1 1/2" x 3/8"	24V AC, 0.5 Amps, 50/60 Hz	
720-402	24 Volt Dual	150,000 BTU	1/2"	3/4"	1/2" FPT with plugs	Uni-Kit Natural Gas	1	NA	24V AC, 0.5 Amps, 50/60 Hz	
720-406	24 Volt Dual	150,000 BTU	3/4"	3/4"	None	Uni-Kit Natural Gas	2	NA	24V AC, 0.5 Amps, 50/60 Hz	
720-472	24 Volt Dual	150,000 BTU	1/2"	1/2"	1/2" FPT with plugs	3.5" WC Natural or 11.0" LP Convertible	NA	1	24V AC, 0.5 Amps, 50/60 Hz	Step-opening to 40% of full flow within 30 seconds for mobile home
720-474	24 Volt Dual	150,000 BTU	1/2"	1/2"	1/2" FPT with plugs	3.5" WC Natural or 11.0" LP Convertible	NA	1	24V AC, 0.5 Amps, 50/60 Hz	Step-opening for mobile home



1 Year Limited Warranty

GAS VALVES

720 Series - Lever Actuated

The Robertshaw® 720 Series Lever Actuated Gas Valves are designed for intermittent pilot ignition applications. This series incorporates a manual valve, pilot valve, dual automatic valves (2), and a main gas pressure regulator. Uni-Kit® models are factory set at 3.5" WC for natural gas, but can be converted to LP by installing the regulator conversion kit included. The 720 Series is designed for many residential applications such as central heating units, space heaters, wall heaters, boilers, and mobile home furnaces. This valve has a compact swing radius of only 3-9/16" to enable it to fit a wide range of OEM replacement applications.

Features and Benefits

- Pilot outlet 1/4" tubing
- 1/4" quick connect terminal type
- Ambient temperature of -40°F to 175°F
- Maximum inlet pressure 14" WC (0.5 PSI)
- Standard NEMA terminals
- Rated as NEC Class 2
- Inlet filtered screen
- Various gas types: natural, manufactured, mixed, LP, and LP/air mixtures
- RoHS compliant



Robertshaw®



Scan for all models, literature and cross reference

Specifications

Part Numbers	Description	Capacity	Inlet Size	Outlet Size	Pressure Regulator Setting	Electrical Rating	Comments
720-070	Slow Opening Model	150,000 BTU	1/2"	3/4"	Uni-Kit® Natural Gas	24V AC , 50/60 Hz, 45 Amps, 5 Watts	Has slow-opening feature for soft ignition. Not normally used on hot surface applications
720-079	Universal Model	150,000 BTU	1/2"	3/4"	Uni-Kit Natural Gas	24V AC , 50/60 Hz, 45 Amps, 5 Watts	



1 Year Limited Warranty



Robertshaw®



Scan for all models, literature and cross reference



GAS VALVES

722 Series - Low Capacity Dual

The Robertshaw® 722 Series Low Capacity Dual Gas Valve Uni-Kit® models are designed for a wide variety of intermittent pilot, direct spark or hot surface heating applications.

They incorporate dual automatic valves (redundant) that are pressure regulated and come factory set at 3.5" WC for natural gas. They can be converted to LP by installing the regulator conversion kit that is included.

Features and Benefits

- Small, compact size, 3-9/16" swing radius, and 90° flanged outlet for side outlet applications allow for greater flexibility of installation
- Incorporates a manual selector valve (On-Off), dual automatic valves, main gas regulator and inlet/outlet pressure taps
- Easily accessible wiring connections, manual selector, and adjustments designed to replace many OEM valves
- Multi-positional and can be mounted in any position except upside down
- As a safety feature, special screws are used and replacement parts are not available to prevent unsafe attempts at repair

Specifications

Part Numbers	Description	Capacity	Inlet Size	Outlet Size	Pressure Regulator Setting	Comments
722-051	Hot Surface and Direct Spark Low Capacity Dual	170,000 BTU	1/2"	1/2"	Uni-Kit® Natural Gas	Straight-thru
722-079	Universal Low Capacity Dual	170,000 BTU	1/2"	1/2"	Uni-Kit Natural Gas	Straight-thru, 1/2" flanged outlet adapts for side outlet applications



1 Year Limited Warranty

WATER HEATING GAS VALVES

110 Series

The Robertshaw® 110 Series Water Heating Gas Valves are designed for universal replacement applications in water tanks. All models feature a built-in, non-cycling Energy Cut-Off (ECO) system to shut off all gas to the water heater in case of excessive water temperatures. The ECO is designed to detect over-temperature conditions and to open. Once opened, the control will not function and a new replacement will be required.

Features and Benefits

- Models include 5-1/2" sensing element
- Various inlet size, outlet size, regulator settings and shank lengths
- Right hand or left hand threads
- Multiple BTU capacities available
- Domestic, commercial and recreational vehicle applications



110-202

Robertshaw®



Scan for all models, literature and cross reference

Specifications

Part Numbers	Description	Flow Setting	Inlet Size	Outlet Size	Shank Length	Pressure Regulator Setting	Temperature
110-202	Water Heater Thermostat Uni-Kit®	45,000	1/2" Pipe	1/2" Inverted Flare	1-3/8"	4.0" WC Natural Gas	160°F (71°C)
110-326	Water Heater Thermostat Uni-Kit	45,000	1/2" Pipe	1/2" Inverted Flare	1-3/8"	3.5" WC Natural Gas	160°F (71°C)
110-262	Water Heater Thermostat Uni-Kit	38,000	1/2" Pipe	1/2" Inverted Flare (Right Hand Threads)	1-3/8"	9" WC to 12" WC LP	160°F (71°C)
110-265	Water Heater Thermostat Uni-Kit	38,000	1/2" Pipe	1/2" Inverted Flare (Left Hand Threads)	1-3/8"	9" WC to 12" WC LP	160°F (71°C)



1 Year Limited Warranty



Robertshaw®



Scan for all models, literature and cross reference

1 Year Limited Warranty

HEATING KITS



710-296

710 Series - Millivolt Kit

The Robertshaw® 710-296 Millivolt Kit includes a low profile millivolt actuated gas valve, a pilot generator kit and an easy-to-use mechanical wall thermostat. The kit includes the Robertshaw gas valve cross reference pocket guide.

Features and Benefits

- Most common parts needed in retrofit millivolt applications
- Reduces inventory with most common parts
- Easy-to-select, use and install

Specifications

Part Numbers	Description	Hood Type	Thermostat	Gas Valve
710-296	Millivolt Kit	1820-009 Pilot Kit	986-1R Thermostat	710-502 Low Profile

HEATING KITS



712-017

712 Series - Pilot Kits

The Robertshaw® 712 Series Intermittent Pilot Ignition System Kit features flame rectification with solid-state logic and flame sensing to provide automatic sequencing that will ensure proper operation of an intermittent pilot ignition device. The 712 pilot ignition systems are available with one of four different gas valve types to fit a wide range of furnace applications.

Caution: Do not use on LP gas applications

Features and Benefits

- Quick and easy installation
- Complete in-depth instructions and trouble shooting information
- Used on natural gas systems only

Specifications

Part Numbers	Description	Gas Valve	Inlet	Outlet	Capacity	Restart	Pressure Regulator Setting	Ignition Control
712-017	Intermittent Pilot Ignition System Kit	720-070	1/2"	3/4"	200,000 BTU	Nonlockout	3.5" WC Natural Gas Only	780-715 (Nonlockout)

HEATING KITS

Hot Surface Uni-Kit360

The Robertshaw® Uni-Kit360 Heating Kit has you covered 360° with universal products all in one box for use with HSI (Hot Surface Ignition) gas systems. Kit includes the following:

- Universal gas valve
- Universal ignition control
- Universal nitride ignitor
- Universal flame sensor
- Universal air pressure sensing switch
- Gas valve cross reference pocket book, screwdriver and toolbag

Features and Benefits

- Universal controls with the necessary parts included for most hot surface heating applications
- Reduces inventory with one easy-to-order SKU
- Trusted brand in heating controls for over 90 years



UNI-KIT360

Robertshaw[®]



Specifications

Part Numbers	Description	Gas Valve	Inlet	Outlet	Capacity	Hot Surface Ignitor	Flame Pattern	Ignition Control	Air Sensing Switch
UNI-KIT360	Universal Hot Surface Heating Repair Kit	720-079	1/2"	3/4"	150,000 BTU	41-802N	10-760	780-910	2374-510

HEATING KITS

Regulator Kits

The Robertshaw® 1751 Series Add-on Pressure Regulator Kits are available for use on the following factory model types; 7000, 7010, 7100, 7200 and 7222. Each 1751 pressure regulator kit provides straight-line regulation and includes all the necessary parts including instructions to convert a specific factory model gas valve.

Features and Benefits

- Converts Natural Gas to LP and vice versa
- Not for use with hydraulic models which cannot be field converted
- Includes all necessary parts for easy regulation conversion



1751-003



Scan for all models, literature and cross reference

Specifications

Part Numbers	Description	Suitable For	Series	Regulator Type	Adjustable WC Pressure Low/High
1751-003	Add-On Pressure Regulator Kit	Natural Gas	700 & 710 Series (Models 7000 & 7000LC)	3.5" WC Natural Gas	3" / 7"
1751-013	Add-On Pressure Regulator Kit	LP	700 & 710 Series (Models 7000 & 7000LC)	11.0" WC LP Gas	8" / 12"
1751-021	Add-On Pressure Regulator Kit	LP	700 & 710 Series (Models 7000 & 7000LC)	Hi-Low Adjustable Output LP Gas	2.7" / 11"



Robertshaw®



Scan for all models, literature and cross reference



780-001

IGNITION CONTROLS

780 Series - Pilot Controls Uni-Kits

The Robertshaw® 780 Series Pilot Controls Uni-Kits® feature a flame sense circuit that will work equally well on a one rod (local sense) or a two rod (remote sense) application. The automatic recycle features assure that, in the event of flame failure, main gas is disabled and the spark repetition sequence is restarted until pilot gas is ignited. Only after pilot ignition has been re-established can main gas be returned to the burner.

The Robertshaw lockout version kits include the capability to shut off all gas to the furnace, should pilot ignition fail to occur after a predetermined time period. The 780-002 provides three tries for ignition. Each ignition period is 90 seconds followed by a six minute time delay between ignition attempts. If the pilot flame is not sensed after three tries, the unit goes into lockout and must be reset at the thermostat.

Features and Benefits

- Replaces one rod and/or two rod systems
- Reduces truck stock inventory, saving space and money
- Includes vent damper adapter assembly
- Easy-to-install with complete in-depth installation instructions
- Pilot and main valves draw 1 Amp at 0.5 power factor
- Combined load at 1.5 Amps at 0.4 power factor
- 95% relative humidity noncondensing at 104°F

Specifications

Part Numbers	Description	Spark Rate	Flame Sense Current	Max Total Current Load	Flame Failure Re-Ignition Time	Thermostat Anticipator Setting	Temperature Range	Transformer	Input Voltage
780-001	Gas ignition control - nonlockout	3 to 4 per second	0.7mA DC @ 25°C	1.5 Amps	0.8 seconds	0.7 Amps	-40°F to 175°F	24V AC, 20 VA	24V AC @ 50/60 Hz
780-002	Gas ignition control - lockout	3 to 4 per second	0.7mA DC @ 25°C	1.5 Amps	0.8 seconds	0.7 Amps	-40°F to 175°F	24V AC, 20 VA	24V AC @ 50/60 Hz

1 Year Limited Warranty

IGNITION CONTROLS

780 Series - Pilot Controls

The Robertshaw® 780 Series Pilot Controls feature flame rectification with solid-state logic and flame sensing to provide automatic sequencing that will ensure proper operation of an intermittent pilot ignition device. When the thermostat calls for heat, the 780 series control simultaneously initiates ignition sparking and opens the pilot valve portion of the gas valve. Pilot flame recognition stops ignition sparking and opens the main valve portion of the gas valve. Pilot burner flame is continuously monitored at a synchronous frequency for the duration of the heating cycle. Should the pilot flame fail during the heating cycle, the control will shut off the main valve until the pilot flame is established.

The Robertshaw 780-845 lockout ignition control provides 90 seconds of spark, followed by a six minute time delay (purge) between ignition attempts. If the pilot flame is not sensed after three tries, the control goes into a one-hour lockout period. At the end of the lockout period, if the demand for heat is still present, the unit will repeat the three tries for ignition.

Features and Benefits

- Reduces truck stock inventory, saving space and money
- Easy-to-install with complete in-depth installation instructions
- Pilot and main valves draw 1 Amp at 0.5 power factor
- Combined load at 1.5 Amps at 0.4 power factor
- 95% relative humidity noncondensing at 104°F



780-715

Robertshaw®



Scan for all models, literature and cross reference

Specifications

Part Numbers	Description	Spark Rate	Flame Sense Current	Max Total Current Load	Flame Failure Re-Ignition Time	Thermostat Anticipator Setting	Safety Lockout Timing	Temperature Range	Transformer	Input Voltage
780-715	Intermittent Pilot - Nonlockout	3 to 4 per second	0.7mA DC @ 25°C	1.5 Amps	0.8 seconds	0.7 Amps	NA	-40°F to 175°F	24V AC, 20 VA	24V AC @ 50/60 Hz
780-735	Intermittent Pilot - Lockout	3 to 4 per second	0.7mA DC @ 25°C	1.5 Amps	0.8 seconds	0.7 Amps	NA	-40°F to 175°F	24V AC, 20 VA	24V AC @ 50/60 Hz
780-845	Intermittent Pilot - Lockout	4 to 15 per second	0.7mA DC @ 25°C	1.5 Amps	2 seconds	0.7 Amps	90 seconds	-40°F to 175°F	24V AC, 20 VA	24V AC @ 50/60 Hz



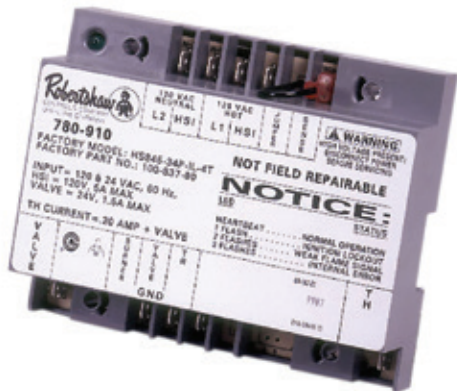
1 Year Limited Warranty



Robertshaw®



Scan for all models, literature and cross reference



780-910

IGNITION CONTROLS

780 Series - Universal Hot Surface Control Uni-Kit®

The Robertshaw® 780 Series Universal Hot Surface Control Uni-Kit® is designed for use on gas fired systems. These controls are equipped with a self-diagnostic green LED for quick troubleshooting. The LED indicates if the system is in normal operation, has gone into lockout, has a weak flame signal, or has an internal error (a defective module). This kit provides all the necessary instructions and hardware needed to replace most hot surface modules.

Features and Benefits

- Reduces truck stock inventory, saving space and money
- Easy-to-install with complete in-depth installation instructions
- Local (sense through the hot surface ignitor) or remote flame sensors
- Single or three ignition attempts or 7 second ignition trial time
- Ignitor warm-up time is 17 or 34 seconds
- 34 seconds or less pre-purge
- Natural or LP gas controls
- Works with 120V AC hot surface ignitors
- Maximum valve current at 1.5 Amps at 24V AC
- 95% relative humidity noncondensing at 104°F

Specifications

Part Numbers	Description	Max Ignitor Current	Flame Failure Re-Ignition Time	Thermostat Anticipator Setting	Temperature Range	Control Input Voltage	Supply Voltage
780-910	Universal Hot Surface Ignition Uni-Kit	5 Amps	0.8 seconds	1 Amp	-40°F to 176°F	24V AC	120V AC @ 50/60 Hz



1 Year Limited Warranty

IGNITION CONTROLS

780 Series - Hot Surface Controls

The Robertshaw® 780 Series Hot Surface Controls are designed for use on gas fired systems. The system acts on a demand for heat by a switch or thermostat to supply power to the ignition control. On non pre-purge models, the ignitor will be energized immediately and remain on for either of two optional selected ignitor heat-up times: approximately 17 or 34 seconds. For models with the prepurge option, there is a time delay equal to the heat-up time selected before the ignitor is energized. At the end of the ignitor heat-up time, the gas valve is opened supplying gas to the main burner. After several seconds, the ignitor is turned off and the sensor is energized. As long as flame is sensed, the system continues to operate.

Features and Benefits

- Reduces truck stock inventory, saving space and money
- Easy-to-install with complete in-depth installation instructions
- Molded-in terminal barriers between terminals
- Models available for local and remote sense application
- Mounting screw provides a positive ground connection
- Small compact size provides no hassle installation
- Main valve current is 1.5 Amps at 24V AC
- 95% relative humidity noncondensing at 104°F



780-785

Robertshaw[®]



Scan for all models, literature and cross reference

Specifications

Part Numbers	Description	Valve Trial Time	Supply Voltage	Ignition Attempts	Pre-Purge Timer	Ignitor Warm-Up Timer	Sensor Type	Max Ignitor Current	Thermostat Anticipator Setting	Temperature Range
780-783	Hot Surface Ignition Control	8 seconds	120V AC	3	34 seconds	34 seconds	Local	5 Amps	0.1 Amps	-40°F to 176°F
780-785	Hot Surface Ignition Control	6 seconds	120V AC	3	NA	34 seconds	Local	5 Amps	0.1 Amps	-40°F to 176°F
780-790	Hot Surface Ignition Control	4 seconds	120V AC	1	NA	17 seconds	Local	5 Amps	0.1 Amps	-40°F to 176°F

Specifications continued

Part Numbers	Input Voltage	Supply Voltage
780-783	24V AC @ 50/60 Hz	120, 208/240, 277 Volts AC
780-785	24V AC @ 50/60 Hz	120, 208/240, 277 Volts AC
780-790	24V AC @ 50/60 Hz	120, 208/240, 277 Volts AC



1 Year Limited Warranty



Robertshaw®



Scan for all models, literature and cross reference



1 Year Limited Warranty

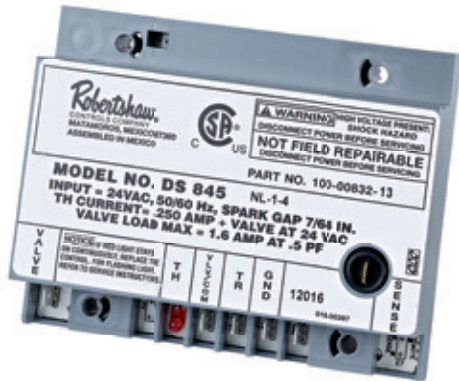
IGNITION CONTROLS

780 Series - Direct Spark Controls

The Robertshaw® 780 Series Direct Spark Controls are applicable to commercial cooking equipment, gas fired heating, and water heating systems of many types. The system acts on a demand for heat by a switch or thermostat to open the gas valve. At the same time, the 780 series ignition control supplies a spark to the electrode which ignites the gas. After the gas is lit, an electronic circuit proves the presence of flame using flame rectification. When the thermostat is satisfied, the gas valve will be closed to shut off the main burner gas.

Features and Benefits

- Replaces one rod and/or two rod systems
- Reduces truck stock inventory, saving space and money
- Easy-to-install with complete in-depth installation instructions



780-502

Specifications

Part Numbers	Description	Type	Supply Voltage	Ignition Attempts	Valve Trial Time
780-502	Direct Spark Ignition Controls	Non Pre-Purge, Enclosed	24V AC	1	4 seconds
780-511	Direct Spark Ignition Controls	Pre-Purge, Remote, Enclosed, 1/4 Q.C.	24V AC	3	7 seconds

IGNITION CONTROLS

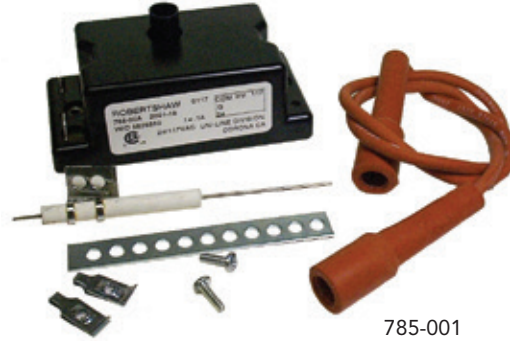
785 Series - Automatic Pilot Relight Kits

The Robertshaw® 785 Series Automatic Pilot Relight Kits are designed for use on rooftop heating equipment, water heaters, boilers, space heaters, unit heaters, dryers, and other commercial, industrial, and residential appliances where the problem of pilot outage may occur. It should only be applied to those systems which already incorporate the necessary pilot-safety control system.

Features and Benefits

Kit Includes:

- Ignitor assembly
- Mounting bracket



Robertshaw[®]



Scan for all models, literature and cross reference

Specifications

Part Numbers	Description	Spark Gap	Temperature Range	High Voltage Output	Electrical Rating
785-001	Pilot Relight Kit	1/8"	-40°F to 185°F	15KV	24/120 Volts AC, 0.1 Amp



1 Year Limited Warranty



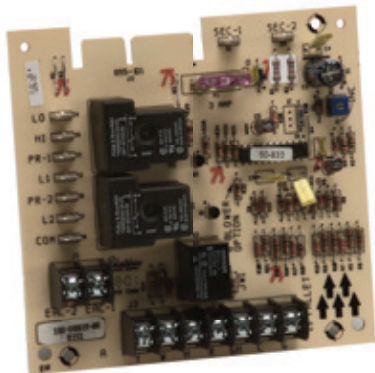
Robertshaw®



Scan for all models, literature and cross reference

1 Year Limited Warranty

IGNITION CONTROLS



695-101

695 Series - Fan Control

The Robertshaw® 695-101 Series Fan Control is a solid state control designed and engineered for the replacement market. It replaces the Carrier / BDP Gas Furnace Control Center that has been used in new equipment for many years. This control center is an exact replacement. No modification to the original wiring or to the appliance sheet metal is required.

Features and Benefits

- Easy-to-install with complete in-depth installation instructions
- 95% relative humidity noncondensing at 50°C
- Reduces truck stock inventory, saving space and money

Specifications

Part Numbers	Description	Cool Off Time	Heat Off Time (Adjustable)	Temperature Range	Control Voltage	Input Voltage
695-101	Replacement Circuit Board for Fan Control Centers	90 seconds	80 to 240 seconds	-40°F to 176°F	18 - 30 Volts AC	120V AC @ 60 Hz

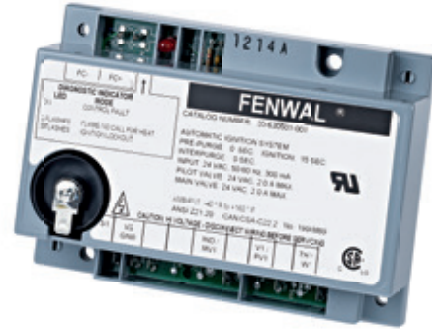
IGNITION CONTROLS

35 Series - Fenwal® Intermittent Pilot Controls

The Fenwal 35 Series Pilot Controls are a 24V AC intermittent pilot ignition control. The microprocessor circuit design provides precise, repeatable timing and operating sequences. The on-board diagnostics with LED output provide assistance with troubleshooting to ensure safe and efficient operation.

Features and Benefits

- Quick connect terminals for easy connection
- Easy-to-install with complete in-depth installation instructions
- Pilot valve draws 2.0 Amps maximum
- Main valve draws 2.0 Amps maximum
- Gray enclosure (Noryl N-190) of fire retardent plastic
- Reduces truck stock inventory, saving space and money



35-630501-001



Scan for all models, literature and cross reference

Specifications

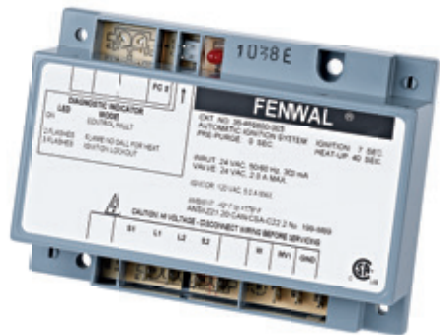
Part Numbers	Description	Flame Sense Method	Auto Reset	Ignition Tries Before Lockout	Trial For Ignition	Pre-Purge	Inter-Purge	Gas Valve Rating (Main and Pilot)	Control Voltage	Electrical Rating
35-630501-001	Intermittent Pilot Ignition Control	Remote	No	1	15	0 seconds	0 seconds	2.0 Amps @ 24V AC	18 - 30 Volts AC	24V AC @ 300mA



1 Year Limited Warranty



Scan for all models, literature and cross reference



35-655800-003

IGNITION CONTROLS

35 Series - Fenwal® Hot Surface Controls

The Fenwal 35 Series Hot Surface Controls are designed to perform many gas-fired 24V AC appliance functions in a single control, resulting in lower system costs. This series monitors the demand for heat, ignites and maintains the flame during heating, and provides diagnostic support.

The on-board diagnostics with LED output provide assistance with troubleshooting and ensures safe and efficient burner operation. The microprocessor circuit design provides precise, repeatable timing sequences for ignition and pre-purge and inter-purge times, as well as multiple tries for ignition.

Features and Benefits

- Edge connector type for easy connection
- Easy-to-install with complete in-depth installation instructions
- Gray enclosure (Noryl N-190) of fire retardent plastic
- Reduces truck stock inventory, saving space and money

Specifications

Part Numbers	Description	Flame Sense Method	Auto Restart	Ignition Tries Before Lockout	Trial Ignition	Pre-Purge	Inter-Purge	Hot Surface Ignitor	Gas Valve Rating	Control Voltage	Electrical Rating
35-655800-003	Hot Surface Ignition Control, Field Selectable Line Voltage Capability	Local / Remote	Yes	1	7	0 seconds	0 seconds	40 second Heat Up, 120/240 Volts AC, 5 Amps Max	2.0 Amps @ 24V AC	18 - 30 Volts AC, 50/60 Hz	24V AC @ 300mA, 120 or 240 Volts AC (L1 and L2 only)
35-655801-013	Hot Surface Ignition Control, Field Selectable Line Voltage Capability	Local / Remote	Yes	3	7	0 seconds	15 seconds	40 second Heat Up, 120/240 Volts AC, 5 Amps Max	2.0 Amps @ 24V AC	18 - 30 Volts AC, 50/60 Hz	24V AC @ 300mA, 120 or 240 Volts AC (L1 and L2 only)



1 Year Limited Warranty



IGNITION CONTROLS

35 Series - Fenwal® Direct Spark Controls

The Fenwal 35 Series Direct Spark Ignition Controls utilize a microprocessor to continually analyze and control the proper operation of the gas burner.

The microprocessor circuit design provides precise, repeatable timing sequences for ignition times and purge times, one hour automatic reset and flame sensing during pre-purge.

The 35 Series includes on-board diagnostics with LED output to provide assistance with troubleshooting, and to ensure safe and efficient burner operation.

Features and Benefits

- Various connection and construction types available
- Easy-to-install with complete in-depth installation instructions
- Gray enclosure (where applicable Noryl N-190) of fire retardant plastic
- Reduces truck stock inventory, saving space and money



35-605606-223



Scan for all models, literature and cross reference

Specifications

Part Numbers	Description	Flame Sense Method	Auto Reset	Ignition Tries Before Lockout	Trial For Ignition	Pre-Purge	Inter-Purge	Connection	Construction	Gas Valve Rating	Control Voltage	Electrical Rating
35-605606-111	Direct Spark Ignition Control	Remote	Yes	3	4	15	15	Edge Connector	Gray Noryl	2.0 Amps @ 24V AC	18 - 30 Volts AC, 50/60 Hz	24V AC @ 300mA
35-605606-223	Direct Spark Ignition Control	Remote	Yes	3	7	30	30	Edge Connector	Gray Noryl	2.0 Amps @ 24V AC	18 - 30 Volts AC, 50/60 Hz	24V AC @ 300mA
35-704600-005	Direct Spark Ignition Control	Local	No	1	10	0	0	Quick Connect Terminals	Open Board	1.5 Amps @ 120V AC	102 to 138 Volts AC, 50/60 Hz	120V AC @ 350mA
35-725206-117	Direct Spark Ignition Control	Remote	Thermostat Power Off	3	15	15	15	Multi-Pin Connector	Potted	1.5 Amps @ 120V AC	102 to 138 Volts AC, 50/60 Hz	120V AC @ 50mA



1 Year Limited Warranty



Robertshaw®



Scan for all models, literature and cross reference



41-401

IGNITORS

Carbide Series

The Robertshaw® Carbide Series Hot Surface Igniters deliver dependable ignition in heating systems of every description: furnaces, boilers, rooftop heaters, infrared burners, unit heaters, water heaters, and many other types of HVAC equipment.

Features and Benefits

- Made from high-purity recrystallized silicon carbide (Crystar™) which combines physical and thermal strength with stable electrical properties
- Designed to reach ignition temperature(s) within 17 seconds
- Have 18-gauge nickel chrome lead wires embedded and metalized in place for maximum holding strength and electrical conductivity
- Manufactured with lead wires enclosed in a special high-temperature fiberglass insulation providing electrical protection
- Operate at 120V AC. Some modules are rated for 208/240V input, however, the voltage to the ignitor is stepped down to 120V AC

Specifications

Part Numbers	Description	Ceramic Block Style	Lead Wire Length	Terminal Connector Type	Comments
41-401	Hot Surface Carbide Igniters	A	4-1/2"	A	Includes a gasket
41-402	Hot Surface Carbide Igniters	B	19"	NA	
41-403	Hot Surface Carbide Igniters	C	5-1/2"	NA	
41-404	Hot Surface Carbide Igniters	C	4-1/2"	D	Includes special mounting adaptors
41-405	Hot Surface Carbide Igniters	D	5-1/2"	NA	
41-406	Hot Surface Carbide Igniters	E	10-1/2"	NA	Includes a gasket
41-407	Hot Surface Carbide Igniters	C	4-1/2"	B	
41-408	Hot Surface Carbide Igniters	B	5"	C	
41-409	Hot Surface Carbide Igniters	C	4-1/2"	D	
41-410	Hot Surface Carbide Igniters	B	4-1/2"	B	
41-411	Hot Surface Carbide Igniters	B	4-1/2"	C	Includes special mounting adaptors
41-412	Hot Surface Carbide Igniters	F	5-1/4"	D	
41-414	Hot Surface Carbide Igniters	F	5-1/4"	D	Includes special mounting adaptors
41-418	Hot Surface Carbide Igniters	B	5-1/4"	C	Includes bracket
41-419	Hot Surface Carbide Igniters	G	5"	D	



Robertshaw[®]



41-402



41-403



41-404



41-405



41-406



41-407



41-408



41-409



41-410



41-411



41-412



41-414

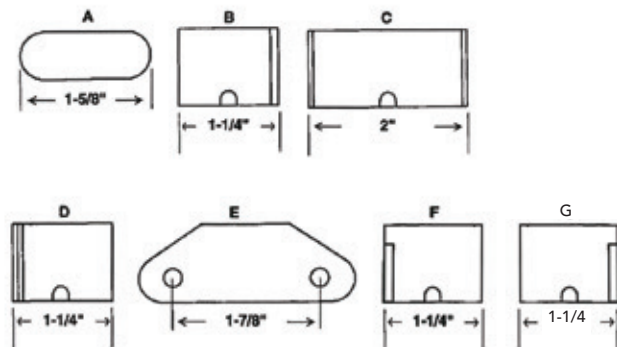


41-418

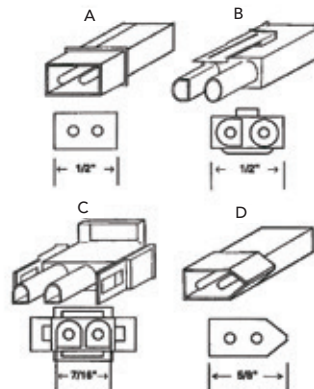


41-419

Ceramic Block Styles



Terminal Block Styles





Robertshaw®



Scan for all models, literature and cross reference



41-401N

IGNITORS

Nitride Series

The Robertshaw® Silicon Nitride Hot Surface Ignitors provide a resilient and reliable solution to gas ignition. The Silicon Nitride Ignitor provides exceptional improvement in durability by virtually eliminating accidental breakage.

Features and Benefits

- All Robertshaw Silicon Nitride Hot Surface Ignitors feature Kyocera™ technology for the best in reliability and robustness
- Kyocera technology has shown superior heating capabilities, generating higher ignition temperatures than other silicon nitride designs
- Robertshaw Silicon Nitride Ignitors are rated for 120V AC
- High-temperature leads are enclosed with a special fiberglass insulation providing superior electrical protection
- This ignitor is a functional upgrade or replacement to silicon carbide ignitor applications
- Ignitors are boxed with mounting hardware and termination required for direct replacement of OEM ignitors

Specifications

Part Numbers	Description	Ceramic Block Style	Terminal Block Style	Lead Wire Length	Comments
41-401N	Hot Surface Nitride Ignitor	A	A	5-1/4"	Includes a gasket
41-402N	Hot Surface Nitride Ignitor	B	NA	24"	
41-403N	Hot Surface Nitride Ignitor	C	NA	5-1/4"	
41-404N	Hot Surface Nitride Ignitor	C	D	5-3/4"	Includes special mounting
41-405N	Hot Surface Nitride Ignitor	D	NA	9"	
41-406N	Hot Surface Nitride Ignitor	E	NA	9"	Includes a gasket
41-407N	Hot Surface Nitride Ignitor	C	B	5-3/4"	
41-408N	Hot Surface Nitride Ignitor	B	C	5-3/4"	
41-409N	Hot Surface Nitride Ignitor	C	D	5-3/4"	
41-410N	Hot Surface Nitride Ignitor	B	B	5-3/4"	



Robertshaw[®]



41-402N



41-403N



41-404N



41-405N



41-406N



41-407N



41-408N

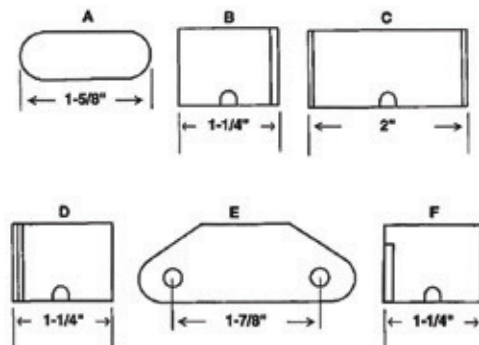


41-409N

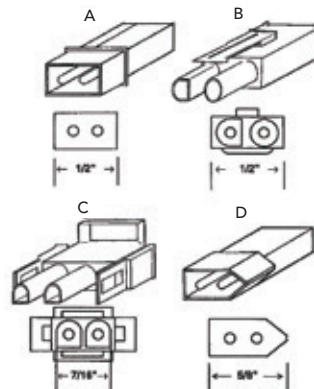


41-410N

Ceramic Block Styles



Terminal Block Styles





Robertshaw®



Scan for all models, literature and cross reference



IGNITORS

Hot Surface Mini-Ignitor Series

The Robertshaw® 41-600 Series Hot Surface Mini-Ignitors deliver dependable ignition in all heating systems. The mini-ignitor's three-second heat-up time, in combination with its small size, have been embraced by gas furnace OEMs.

Features and Benefits

- Engineered for easy handling, simple installation and trouble-free operation
- Made of a unique, non-porous, high strength material
- Operates at 120V AC

Specifications

Part Numbers	Description	Ceramic Block Style	Replaces
41-604	Hot Surface Furnace Mini-Ignitor	4"	Armstrong #44744-2
41-605	Hot Surface Furnace Mini-Ignitor	2.5"	York Conversion Kit #473-20937-001

1 Year
Limited
Warranty

IGNITORS

Universal Ignitor Series

The Robertshaw® Universal Ignitors are the perfect truck stock item. All universal ignitors replace over 130 ignitors currently used in the field. To allow for universal applications, mounting brackets and hardware are included.

Robertshaw Universal Ignitors are recommended for operating voltage of 120V AC. Three models are available. The 41-802N is the best model available with the highest level of durability. The 41-801N offers medium durability, and the 41-803 offers good durability.

Features and Benefits

41-802N

- The ultimate in silicon nitride with technology from Kyocera™ for the best durability
- Best heat dissipation

41-801N

- Silicon nitride technology for better durability
- Added strength

Flame sensors are required for all Silicon Nitride Ignitors (41-802N and 41-801N). Ignitor/Sensor assembly 1751-729 (24" lead) or 1751-749 (72" lead) can be used if an existing flame sensor is not present and a terminal is available on the ignition control.

41-803

- High density silicon carbide for good physical strength and durability
- Less current required to light



Robertshaw[®]



Scan for all models, literature and cross reference

Specifications

Part Numbers	Description	Heating Element	Warranty Duration
41-801N	Universal Hot Surface Ignitor	Rod shaped	2 years
41-802N	Universal Hot Surface Ignitor	Flat blade	3 years
41-803	Universal Hot Surface Ignitor	Double helix spiral	1 year

1 Year Limited Warranty

2 Year Limited Warranty

3 Year Limited Warranty



Robertshaw®



Scan for all models, literature and cross reference



1820-009



1830-490

PILOTS

1820 and 1830 Series

The Robertshaw® 1820 Series Pilot Uni-Kit® models are designed to replace hard-to-find ITT-General PG9 type pilots. A special 1/4" tubing adaptor is typically provided with nut and ball sleeve. Uni-Kits are available with and without a 32" [810mm] thermopile.

The 1830 Series Pilot Uni-Kit models are designed to be used with all Robertshaw and most competitive thermocouples. Uni-Kit models include an adaptor that converts a threaded thermocouple/thermopile model 2CH to a snap-in thermocouple type, model 2C.

Features and Benefits

- Many flame pattern types available
- Thermocouple or thermopile options
- Spark electrode available
- Horizontal or vertical gas inlet
- Several mounting bracket types available
- Aerated pilots with non-linting characteristics

Specifications

Part Numbers	Description	Hood Type	Mounting Bracket Type	Flame Pattern Type	Lead Lengths	Includes
1820-009	PG9 Replacement Pilot Uni-Kit®	NA	NA	90° Right Hand	36"	1950-532 Thermopile and Orifices
1820-019	PG9 Replacement Pilot Uni-Kit	NA	NA	90° Left Hand	36"	1950-532 Thermopile and Orifices
1830-001	2CH & 2C Incinerator-Target Pilot Uni-Kit	2	6	Standard	NA	Orifices
1830-210	2CH & 2C Incinerator-Target Pilot Uni-Kit	2	2	Standard	NA	Orifices
1830-489*	2CH & 2C Incinerator-Target Pilot Uni-Kit	6	6	3-Way	NA	Orifices
1830-490	2CH & 2C Incinerator-Target Pilot Uni-Kit	6	6	3-Way	NA	Orifices
1830-491	2CH & 2C Incinerator-Target Pilot Uni-Kit	6	6	3-Way	NA	Orifices

*International export models

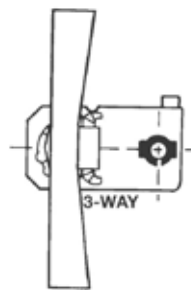
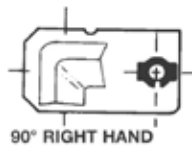
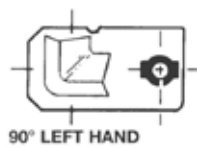
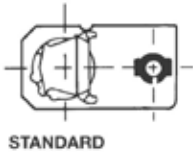
Hood Type



Mounting Bracket Type



Flame Pattern Type





Robertshaw®



Scan for all models, literature and cross reference



1980-030

THERMOCOUPLES

1900 Series

The Robertshaw® 1900 Series Thermocouples include either a special low-mass or quick dropout thermocouple. It is usually found on applications that require an oxygen depletion system on the thermo safety. It is also found on many LP gas applications that require a quick dropout of the thermo safety if there is a loss of pilot flame.

⚠ ATTENTION: The 1960-027 has standard thermocouple threads, and WILL NOT fit applications with metric threads.

The Robertshaw 1970 Series Uni-Couple® design allows for installation to virtually all pilot burners. The versatile zip nut may be pushed, pulled or threaded onto the thermocouple's rolled threads for proper positioning in every application.

The Robertshaw 1980 Series Snap-Fit Thermocouples offer easy installation into the majority of pilot burners. They are manufactured without complicated adaptors, but with extra insulation that the brass sheath provides under high ambient temperatures.

Features and Benefits

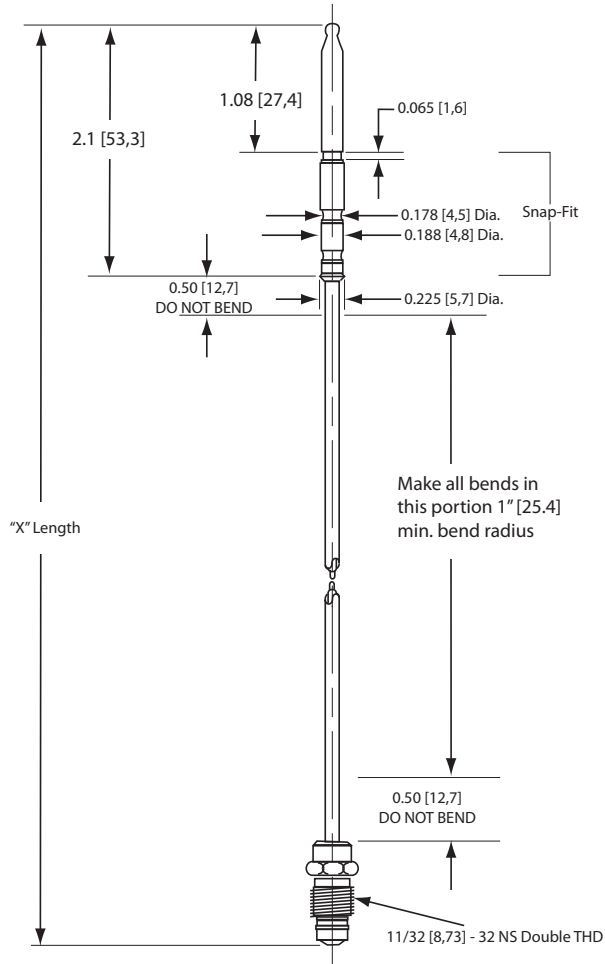
- Easy burner installation with attached threaded nut
- Stainless steel outer jacket for long life and resistance to heat blistering
- Combination of copper and nickel alloys for good electrical conductivity
- Mica washer to insulate from shorting conditions
- Tinnerman clip included
- Various lengths available for multiple applications

Specifications

Part Numbers	Description	"X" Length
1960-027	Low Mass Thermocouple	27"
1970-018	Uni-Couple® 20 to 30 Millivolts	18"
1970-024	Uni-Couple 20 to 30 Millivolts	24"
1970-036	Uni-Couple 20 to 30 Millivolts	36"
1980-018	Snap-Fit Thermocouple	18"
1980-024	Snap-Fit Thermocouple	24"
1980-030	Snap-Fit Thermocouple	30"
1980-036	Snap-Fit Thermocouple	36"
1980-048	Snap-Fit Thermocouple	48"

Product Drawings

1980 Series



Robertshaw[®]

1 Year
Limited
Warranty



Robertshaw®



Scan for all models, literature and cross reference



1950-001



1951-001

THERMOPILES

1950 and 1951 Series

The Robertshaw® 1950 and 1951 Series Thermopiles lead the industry for gas appliance applications. Their primary function is to ensure a standing pilot light is operative so that on a call for heat, the main burner gas will be properly ignited. Thermopiles are placed in gas applications to detect the existence of a flame for safety purposes by shutting off the potential gas flow to a burner.

A thermopile is the assembly of many thermocouples to increase the millivolt output.

Robertshaw thermopiles have two types of connections: coaxial and two-wire spade connectors. The 1950 Series Thermopiles, also known as TP-75, are two-wire spade connectors. The 1951 Series Thermopiles, also known as CP-2 (250 to 750 millivolts), are coaxial connectors. The 1950 and 1951 Series Thermopiles (pilot generators) are designed for use on self-powered gas control systems. They can be used to replace similar competitive devices.

Features and Benefits

- Easy burner installation with attached threaded nut
- Stainless steel outer jacket for long life and resistance to heat blistering
- Combination of copper and nickel alloys for good electrical conductivity
- Mica washer to insulate from shorting conditions
- Tinnerman clip included
- Various lengths available for multiple applications

Specifications

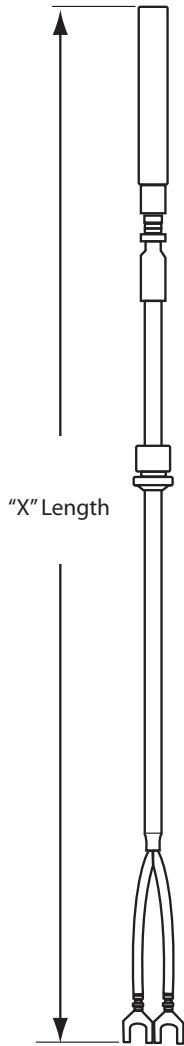
Part Numbers	Description	"X" Length	Includes	Connection Type	Open Circuit Output
1950-001	Thermopile	36"	PG9 Pilot Adaptor	Two Lead	250-750 mV
1950-532	Thermopile	36"		Two Lead	250-750 mV
1951-001	Thermopile	36"	PG9 Pilot Adaptor	Coaxial	250-750 mV
1951-536	Thermopile	36"		Coaxial	250-750 mV



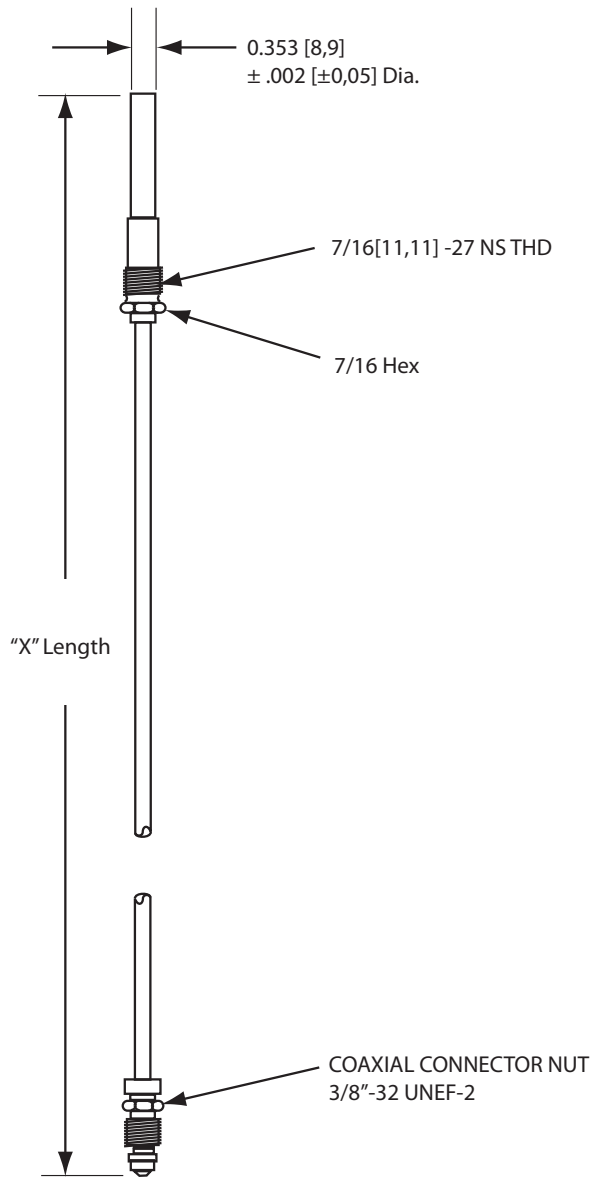


Product Drawings

1950 Series



1951 Series



Robertshaw[®]

1 Year
Limited
Warranty



Robertshaw®



Scan for all models, literature and cross reference



2374-510



10-650

AIR PRESSURE SENSING SWITCHES

2374 Series - Universal

The Robertshaw® 2374-510 Air Pressure Sensing Switch has a glass-filled polycarbonate housing containing a sensing diaphragm and an integral snap-acting switch with three male 90° quick-connect terminals. The switch can sense positive, negative or differential air pressure. The field adjustable set point range of this switch is 0.10" WC to 10.0" WC. Using the switch accessories contained in this kit, the switch can be applied to a wide variety of residential and light commercial HVAC applications.

2374-510 Kit Contents:

- Air pressure sensing switch
- Calibration springs (5 options)
- Orifice flows (4 options)
- Mounting brackets (2 options)
- Calibration tool (hex wrench)

The Robertshaw 10-650 Sensing Probe Kit provides a simple, practical and standardized approach to sampling air for HVAC air pressure sensing applications. This convenient kit includes a seven inch universal air sample probe suitable for both static and impact applications. The included mounting flange is efficiently installed using the (2) 6# x 3/8" type 25 tap screws. The mounting flange locks the air sample probe in place via a 6# x 1/4" slotted set screw, providing a standard method of controlling the insertion depth of the air sample probe into the air stream. Three feet of clear vinyl tubing is included in the kit for connecting the air sample probe to the air switch. Also provided is a slip-on adaptor for use with an installed air switch equipped with a compression style air sample line connector.

10-650 Kit Contents:

- Universal 7" probe
- Mounting flange
- Flange-locking screw set
- 3' vinyl tubing
- Slip-on adaptor

Specifications

Part Numbers	Description	Switch	Set Point Range	Temperature Range	Connection	Electrical Rating
2374-510	Universal Air Pressure Sensing Switch	SPDT	0.10" to 10.0" WC	-40°F to 190°F (-40°C to 88°C)	Silver Contacts	1/10 Hp @ 120 to 277 Volts AC; 28VA Pilot Duty @ 24V AC; 125VA Pilot Duty @ 120V AC; 5 Amps @ 24, 120, 277 Volts AC
10-650	Sensing Probe Kit with 7" Probe	NA	NA	-40°F to 190°F (-40°C to 88°C)	3/16" Flexible Rubber Tubing	NA



1 Year Limited Warranty

AIR PRESSURE SENSING SWITCHES

2374 Series - Adjustable

The Robertshaw® 2374 Series Adjustable Air Sensing Switches are designed to replace a wide variety of air sensing switches found in residential and light commercial applications including furnaces, electronic air cleaners and humidifiers. Two models are currently available with adjustable ranges. Both models are provided with an SPDT switch that can be actuated by positive or negative pressure or by pressure differential. Highly accurate, these switches are practically insensitive to temperature change with an operating temperature range of -40°F to 190°F (-40°C to 88°C). Each switch includes mounting hardware and an adjustment tool for easy installation and calibration.

Features and Benefits

- Field adjustable control set point
- Air sample line connectors will accept 1/8", 1/4" or 3/8" tubing
- Electrical connection is 1/4" spade
- Vertical operating mounting position for diaphragm
- UL File Number MH6213, CSA File Number LR18754



2374-495

Robertshaw®



Scan for all models, literature and cross reference

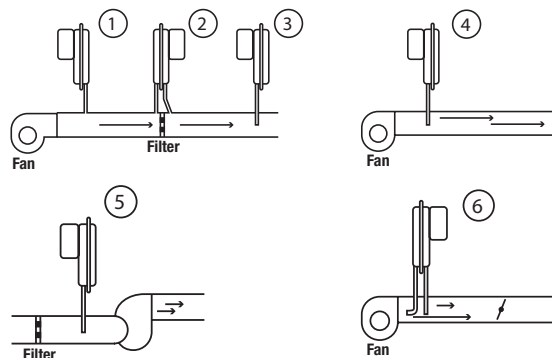
Specifications

Part Numbers	Description	Switch	Set Point Range	Maximum Pressure	Temperature Range	Electrical Rating
2374-495	Adjustable Air Sensing Switch	SPDT	0.25" to 1.0" WC	0.5 PSI	-40°F to 190°F (-40° to 88°C)	5 Amps @ 120-277 Volts AC, 5 Amps @ 28V DC, 1 Amp Pilot Duty 120 VA
2374-498	Adjustable Air Sensing Switch	SPDT	1.00" to 4.0" WC	0.5 PSI	-40°F to 190°F (-40° to 88°C)	5 Amps @ 120-277 Volts AC, 5 Amps @ 28V DC, 1 Amp Pilot Duty 120 VA

Typical Applications For Sensing Switch and Sensing Probe Kit

1	Positive static pressure increases as the filter gets dirty.
2*	Differential across filter changes as filter gets dirty.
3	Flow is reduced as filter gets dirty.
4	Fan operation or air flow with little or no static pressure.
5	Negative pressure increases as the filter gets dirty.
6*	Fan operation and true air flow with varying amounts of static pressure. Probes must be perpendicular to the air flow.

* Applications use two (2) Sensing Probe Kits



2 Year Limited Warranty



Robertshaw®



Scan for all models, literature and cross reference

1 Year Limited Warranty

HEATING ACCESSORIES

Flame Sensors

The Robertshaw® Flame Sensor Assembly and Replacement Sensors have high temperature Kanthol sensor rods that will withstand 1800°F (982°C). The sensor rod is 4" long and can be cut and bent to match an original unit. Excellent replacement for most manufacturers' flame sensors.

Features and Benefits

- Includes 30" of Teflon insulated lead wire with a 482°F (250°C) rating
- Connects to a 1/4" quick connect terminal



Specifications

Part Numbers	Description	Comments
10-227	Replacement S1 Sensor	S1 Sensor has 1/4" quick connect terminal
10-760	Flame Sensor Assembly	Full assembly

HEATING ACCESSORIES

Universal Pilot Ignitor Sensor

The Robertshaw® Universal Pilot Mounting Ignitor Sensor is primarily used with the 712 series intermittent pilot ignition Uni-Kit®. This ignitor and sensor assembly includes mounting bracket, mounting hardware and 24" lead.

Features and Benefits

- Includes all necessary parts for installation
- Quick replacement parts



Specifications

Part Numbers	Description	Length	Comments
1751-729	Universal Pilot Mounting Ignitor Sensor	24"	Includes ignitor/sensor assembly, mounting bracket and hardware

HEATING ACCESSORIES

Pilot Orifices

The Robertshaw® Pilot Orifices are used as replacement parts in Robertshaw 1820 and 1830 type pilots.

Features and Benefits

- Compatible with 1820, 1830 (2C, 2CH, 2S, 2SH) Pilots
- Orifice can fit into 3/16" or 1/4" tubing



10-021

Robertshaw[®]



Specifications

Part Numbers	Description	Type Gas	Tube Size	Orifice Size
10-021	Pilot Orifice for Heating or Cooking	Natural Gas	3/16" or 1/4"	0.018"
10-114	Pilot Orifice for Heating or Cooking	LP	3/16" or 1/4"	0.010"
10-209	Pilot Orifice for Heating or Cooking	Natural Gas	3/16" or 1/4"	0.026"
10-210	Pilot Orifice for Heating or Cooking	LP	3/16" or 1/4"	0.016"

HEATING ACCESSORIES

Tubing

The Uni-Line® aluminum tubing is versatile for all your replacement needs. It comes in a full range of sizes in 50 and 5 foot lengths.

Features and Benefits

- Aluminum tubing meets ASTM Standard #483
- Uses a 1435 alloy with a 0.035 wall thickness
- Tubing is rated at 90 PSI with an 11,000 tensile, 9500 yield and a 25% elongation



11-193



Scan for all models, literature and cross reference

Specifications

Part Numbers	Description	Length	Diameter Size
11-193	Aluminum Tubing	50'	1/4"
11-195	Aluminum Tubing	50'	3/8"
11-293	Aluminum Tubing with Fittings	5'	1/4"

1 Year Limited Warranty



Robertshaw®



Scan for all models, literature and cross reference

1 Year Limited Warranty

HEATING ACCESSORIES



1751-012

Dial - Gas

The Robertshaw® line of replacement gas dials for gas valves come in many colors with various options. More selections can be viewed at www.uni-line.com.

Features and Benefits

- Replacement dial for use with Unitrol® 7000 gas valves
- Beige color with On, Off and Pilot selections
- Not for use with 700 Series Pilot Ignition gas valves

Specifications

Part Numbers	Description
1751-012	Beige knob dial

HEATING ACCESSORIES

4590 Series - Breakaway Ferrules

The Robertshaw® 4590 Series Breakaway Ferrules are used for attaching tubing to gas valves. Applications include heating, cooking and water heating.

Features and Benefits

- One breakaway ferrule part replaces the need for an additional nut
- Sold in multiple quantities for convenience
- Screw machined brass fittings for quality performance



Robertshaw[®]



Scan for all models, literature and cross reference

Specifications

Part Numbers	Description	Size	Quantity
4590-065	Breakaway Ferrules For Venting	1/8" Tubing	Package of 15
4590-067	Breakaway Ferrules	3/16" Tubing	Package of 15
4590-069	Breakaway Ferrules	1/4" Tubing	Package of 15
4590-071	Breakaway Ferrules	3/8" Tubing	Package of 6
4590-816	Extended Breakaway Ferrules	1/4" Extended	Package of 15

1 Year Limited Warranty